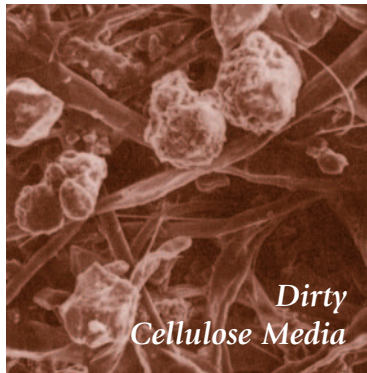


Clean
Cellulose Media

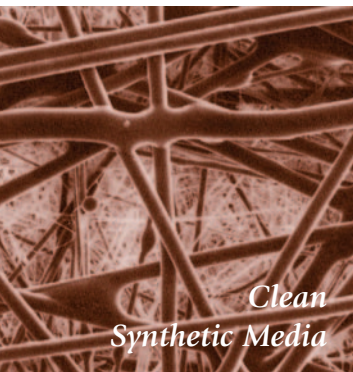


Dirty
Cellulose Media

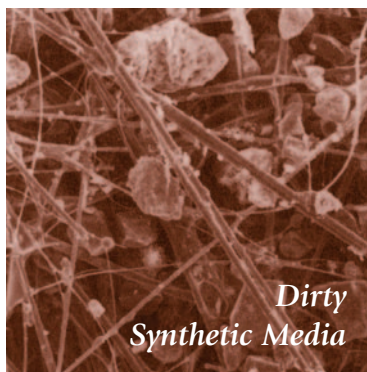
Clean fluid is essential

Improving system fluid cleanliness levels, providing better cold start performance and meeting service interval expectations are the primary objectives in the design of Baldwin hydraulic filters. To accomplish these goals, Baldwin Filters utilizes multiple types of filtration media:

- **Cellulose Media** — The original and most common media is made of natural fibers. These twisted fibers are larger and more irregular than synthetic fibers – creating more resistance to flow or pressure drop.
- **Synthetic Media** — These man-made glass fibers are very uniform in size and shape – creating the least possible resistance to flow and providing improved efficiency to protect sensitive controls.
- **Blended Media** — A blend of cellulose and synthetic fibers provides improved efficiency, along with increased dirt-holding capacity.



Clean
Synthetic Media



Dirty
Synthetic Media

Depend on Baldwin Filters

Protect your equipment with heavy-duty Baldwin filters. When it comes to coverage, Baldwin Filters provides the widest range of heavy-duty lube, air, fuel, coolant, hydraulic and transmission filters in the industry.

Baldwin consistently manufactures filters designed to meet or exceed the quality, performance and supply requirements of original equipment and aftermarket customers.

Africa
Baldwin Filters South Africa
Ph: 27-21-534-0029
Fax: 27-21-534-3730
E-mail: africa@baldwinfilter.com

Australia & New Zealand
Baldwin Filters Aust., Pty. Ltd.
Ph: 61-3-9353-7300
Fax: 61-3-9353-7301
E-mail: australia-newzealand@baldwinfilter.com

Central & South America
Baldwin Filters
Ph: (786) 425-1896
Fax: (786) 425-9138
E-mail: latinamerica@baldwinfilter.com

China
Baldwin Filters
Ph: 852 2814 7722
Fax: 852 2814 7744
E-mail: china@baldwinfilter.com

Europe
Baldwin Filters N.V.
Ph: 32 3 328 18 88
Fax: 32 3 328 18 99
E-mail: europe@baldwinfilter.com

Mexico
Filtros Baldwin de Mexico, S.A. de C.V.
Ph: 5255-5445-0660
Fax: 5255-5446-0677
E-mail: mexico@baldwinfilter.com

Middle East
Baldwin Filters
Ph: (308) 237-9782
Fax: (308) 237-9769
E-mail: middleeast@baldwinfilter.com

Russia
Baldwin Filters
Ph: (308) 237-9749
Fax: (308) 237-9769
E-mail: russia@baldwinfilter.com

Southeast Asia & Pacific Rim
Baldwin Filters
Ph: 65-6382-6619
Fax: 65-6382-6182
E-mail: southeastasia@baldwinfilter.com

UK & Ireland
Baldwin Filters Ltd.
Ph: 44-1702-291668
Fax: 44-1702-290846
E-mail: uk-ireland@baldwinfilter.com



Hydraulic System protection



BALDWIN FILTERS® **BALDWIN**

a CLARCOR company
4400 East Highway 30 • P.O. Box 6010
Kearney, Nebraska 68848-6010
Phone: (308) 234-1951 • Toll Free: (800) 822-5394
Fax: (800) 828-4453 • Int'l Fax: (308) 237-9769
Internet: www.baldwinfilter.com

Heavy-duty protection

As hydraulic systems are becoming more sophisticated, the hydraulic filter has become a critical component. With the need for closer tolerances, faster cycle times, higher pressures and extended service intervals, more demand is being placed on the hydraulic filter.

Proper filtration starts with selecting the right filter based on the original equipment manufacturer's recommendations, which include:

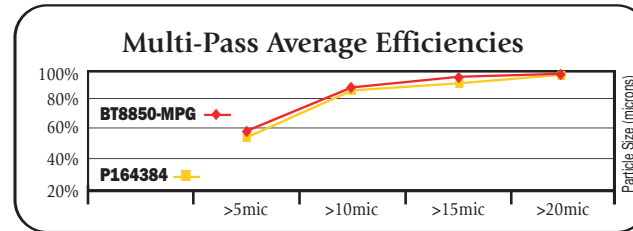
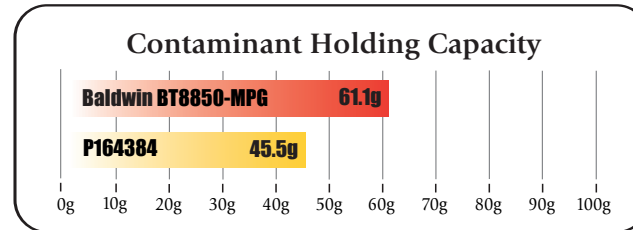
- The type of fluid used and the system operating pressure.
- The amount of fluid flow required for system operation.
- The amount of restriction (resistance to fluid flow) caused by the filter.
- The amount of contaminant the filter needs to be able to trap and hold in order to meet service interval expectations.
- The level of filtration (fluid cleanliness level) required by the specific application.

In addition to these factors, Baldwin takes into account that hydraulic systems are using more filters than ever. Increased sophistication and the use of sensitive, close-tolerance components often require strategic location of several filters instead of just one. Baldwin offers more than 850 hydraulic filters to meet these needs.

Maximum performance

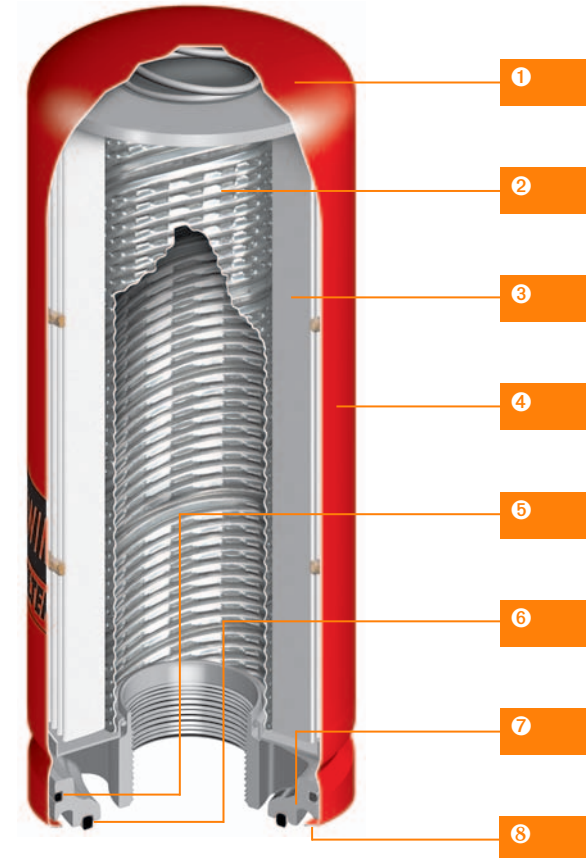
Baldwin filters are manufactured to meet or exceed original equipment specifications established by equipment manufacturers.

ISO 16889 tests show Baldwin Filters exceeds the standards for contaminant removal efficiency and contaminant holding capacity. The following product comparisons illustrate Baldwin's superior performance.



ISO 16889 Test: Flow Rate 20 gpm, ISO Medium Test Dust, Termination at 25 psid.

Medium Pressure Hydraulic



- 1 **Heavy-Duty, All-Metal Housing** is built to handle the stress and punishment of sophisticated, modern hydraulic systems.
- 2 **High Strength Spiral Lowered Centertube** helps prevent collapse caused by a sudden difference between internal and external pressure.
- 3 **High Efficiency Media**, either synthetic or cellulose, is designed to meet or exceed the requirements designated by the OEM.
- 4 **Seamless Canister Design** provides highest possible integrity.
- 5 **Integral Housing Seal** prevents leakage.
- 6 **Heavy-Duty O-Ring Seal** requires only 1/2 turn after gasket contact, for easier installation.
- 7 **Heavy-Duty Baseplate** is constructed of aluminum, offering the strength and durability necessary for 500 psi hydraulic systems.
- 8 **L-Lock Hem** joins the canister and baseplate to protect against high-pressure surges.

