

Air Ram™

3 in 1 Intake Accessory



Protects Against Moisture & Improves Airflow Performance/Fuel Economy

Primarily over-highway trucks
for engine airflow of 700 to 1000+ cfm

Improves intake system airflow and fuel economy by reducing restriction.

Examples

Using an Air Ram = 1" H₂O restriction.

Using a Conventional Air Inlet Hoods :

@ 33 mph, 53 kmh = 3.5" H₂O restriction

@ 45-52mph, 72-74 kmh = 4" H₂O restriction

@ 60 mph, 97 kmh = 5" H₂O restriction

Lightweight, non-corrosive, and durable
– no service needed!

Inlet screen prevents large debris from entering intake ducting

Side louvers ensure continuous airflow to intake system

Common inlet sizes fit most installations

Eliminates water from air intake system

@ 700 cfm airflow = 90%

@ 800 cfm airflow = 93%

@ 1000 cfm airflow = 93%*

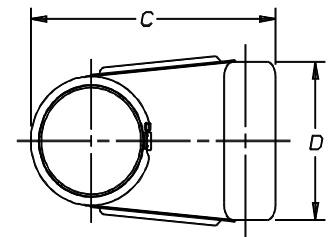
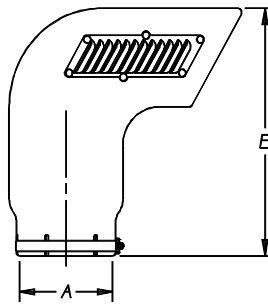
* based on item H001660



Model H001654
High profile model
mounts on
inlet stack, above and
behind cab



Low Profile Air Ram, designed for direct
mount to cleaner inlet tube.



Air Ram Inlet Hood

Part Number	Inlet Dia. (A)	Height (B)	Depth (C)	Width (C)	Louver on side?
H008149	3.00" 76mm	7.48" 190mm	7.40" 188mm	5.7" 144mm	No
H008154	4.00" 102mm	9.05" 230mm	5.00" 240mm	9.45" 165mm	No
H008150	5.00" 127mm	9.88" 251mm	11.18" 284mm	6.89" 175mm	No
H001733	6.00" 152mm	14.80" 376mm	14.85" 377mm	8.98" 228mm	No
H001660	6.06" 154mm	14.80" 376mm	14.85" 377mm	8.98" 228mm	Yes
H001725	7.00" 178mm	15.53" 394mm	15.63" 397mm	9.86" 250mm	No
H001654	7.06" 179mm	15.53" 394mm	15.63" 397mm	9.86" 250mm	Yes
H001661	8.06" 205mm	16.16" 410mm	16.95" 431mm	10.92" 277mm	Yes
Low Profile X004995*	6" or 7" 154 or 178mm	6.25" 159mm	12.03" 305mm	13.20" 335mm	No

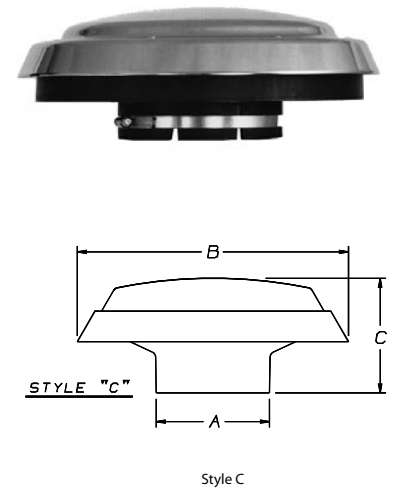
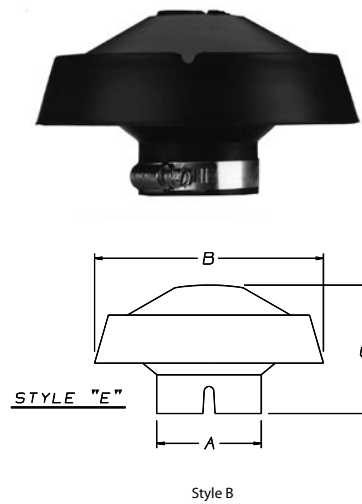
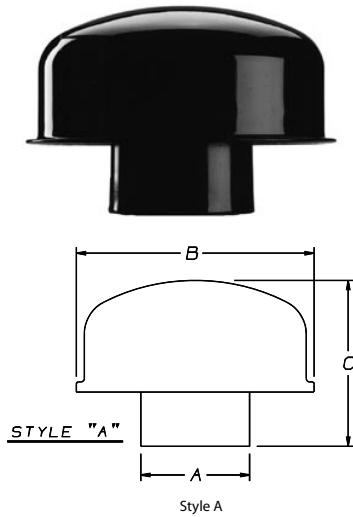
* Adaptor Ring included for 6" applications (Adaptor not needed for 7")
Application Note: One mounting band is included with each Air Ram

Inlet Hoods

Air Intake Accessories



- Protect Against Large Debris Ingestion
- Mount on Stack Top or directly to Aircleaner



Part Number	Style	Fits O.D. (A)	Hood Dia. (B)	Height (C)	Add to Stack	Mat'l	Rain Shroud?	Weight
H002068	B	1.75" 44mm	6.00" 152mm	3.37" 86mm	2.05" 52mm	Plastic	No	0.2lb 0.09kg
H008207	B	2.00" 51mm	6.00" 152mm	3.4" 86mm	2.6" 66mm	Plastic	No	0.3lb 0.14kg
X001966	A	2.5" 64mm	5.25" 133mm	3.97" 101mm	3.50" 89mm	Metal	No	0.8lb 0.36kg
H008208	B	2.50" 64mm	6.00" 152mm	3.4" 86mm	2.4" 61mm	Plastic	No	0.3lb 0.14kg
H008209	B	3.00" 76mm	6.00" 152mm	3.4" 86mm	2.1" 53mm	Plastic	No	0.3lb 0.14kg
H001379	B	3.00" 76mm	6.00" 152mm	3.4" 86mm	2.5" 64mm	Plastic	No	0.3lb 0.14kg
H000473	C	3.75" 95mm	11.50" 292mm	5.13" 130mm	3.63" 92mm	Plastic	Yes	1.00lb 0.45kg
H008210	B	4.00" 102mm	8.7" 221mm	4.06" 103mm	2.9" 74mm	Plastic	No	0.5lb 0.14kg
H000471	C	4.50" 114mm	11.50" 292mm	4.88" 124mm	3.38" 86mm	Plastic	Yes	1.00lb 0.45kg
H000469	C	5.00" 127mm	11.5" 292mm	4.88" 124mm	3.31" 84mm	Plastic	No	0.80lb 0.36kg
H000604	C	5.50" 140mm	16.0" 407mm	5.75" 146mm	4.94" 125mm	Plastic	Yes	1.80lb 0.80kg
H000606	C	6.00" 152mm	16.0" 407mm	5.75" 146mm	4.94" 125mm	Plastic	Yes	1.80lb 0.80kg
H001756	C	6.00" 152mm	13.0" 330mm	4.06" 103mm	2.69" 68mm	Bright	No	1.50lb 0.68kg
H000607	C	7.00" 178mm	16.00" 407mm	5.75" 146mm	4.09" 104mm	Plastic	Yes	1.80lb 0.80kg
H001053	C	8.00" 203mm	16.00" 407mm	6.19" 157mm	4.69" 119mm	Plastic	Yes	1.80lb 0.80kg
H001946	C	8.00" 203mm	16.00" 407mm	6.19" 157mm	4.60" 117mm	Bright	Yes	1.50lb 0.68kg

Vacuator™ Valves

For Medium to Heavy Duty Air Cleaners



Replace Damaged or Missing VacValves Immediately!

The Vacuator Valve, standard on the majority of Donaldson air cleaners, is an important part of the functionality of the air cleaner. It is an integral part of the pre-cleaning stage on two-stage air cleaners.

The dust cup, where pre-cleaned dust is collected, is normally under a slight vacuum when the engine is running. The normal engine pulsing of the vacuum causes the Vacuator Valve to open and close. This action automatically expels any collected dust and water. The Vacuator Valve also unloads when the engine is stopped.

Application Notes

For proper operation, the Vacuator Valve should be located at the lowest point on the air cleaner or dust cup pointing down.

Never paint the Vacuator Valve. Solvents and chemicals will shorten the usable life.

If the Vacuator Valve is torn, shredded or turned inside out, its durometer may be too soft for the application. Choose a model with a harder durometer (higher number). Conversely, if the Vacuator Valve doesn't empty itself properly, the durometer may be too hard. Choose one with a softer durometer (lower number)



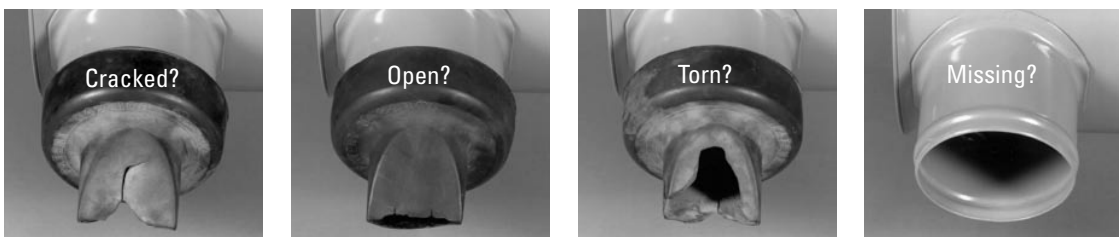
The Donaldson Vacuator Valve, also known as VacValve, is made in a variety of sizes and shapes to fit various applications. The Donaldson part number is molded into each part for easy identification.

Vacuator Valves

Part Number	Diameter	Durometer
P103198	3.0" 76mm	40
P105220	3.0" 76mm	60
P106593	3.0" 76mm	60
P112803	3.0" 76mm	40
P149099	1.0" 25mm	60
P158914	2.0" 51mm	50
P522958	2.0" 51mm	60
P525956	1.0" 25mm	60

For the longest filter service life, replace damaged or missing Vacuator Valves immediately!

If your valve is cracked, torn, remains open or is missing, dust particles that are normally expelled can deposit themselves onto the filter and will shorten air filter service life. Replace it!



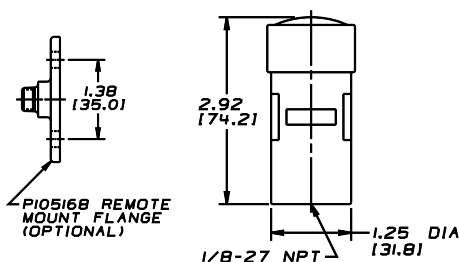
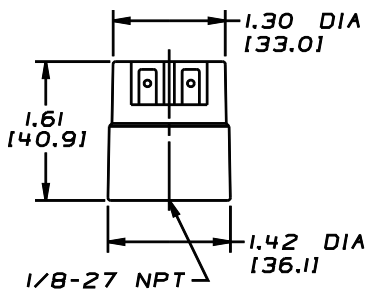
Electrical Indicator

Connects to Light Buzzer or Computer

Our electrical indicator is designed for a variety of on- and off-highway applications within operating temperatures of -40°F to +212°F (-40°C to +100°C). When restriction level reaches the maximum recommended limit, an electrical signal activates a light, a buzzer, or a computer, as you choose. The indicator automatically resets itself after the filter is serviced. 12-24 Volts. Maximum load: 6 watts (light or buzzer). Contacts have no polarity. Switch contacts are normally in the open position. Quick connectors and light buzzer or computer must be purchased separately.



Electrical Indicator	Restriction Limit
X770037	5"H2O/ 3.7 kPa
X770050	20"H2O/ 5.0 kPa
X770062	25"H2O/ 6.2 kPa
X770075	30"H2O/ 7.5 kPa



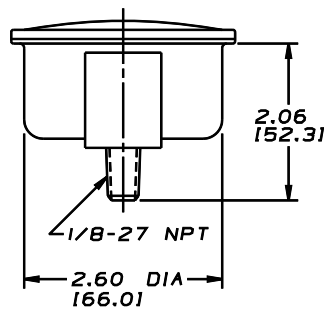
Service Gauge

for Instrument Panel



Continuously reads restriction in inches of water vacuum when engine is in operation and installs conveniently on instrument panel or wherever operator can easily see the dial. Mount into a 2-5/8" diameter hole. Kit includes full installation instructions, a P112257 safety filter fitting, clamp and nuts for dash mounting. Hoses not included.

Gauge Kit	Restriction Limit
X002730	30"H2O/ 7.5 kPa
X002700	60"H2O/ 15 kPa



SafetySignal™

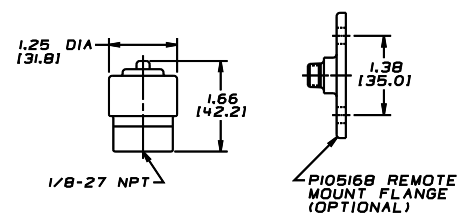
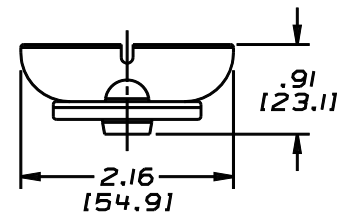
Wing Nut Indicator for Safety Filter

The Donaldson SafetySignal service indicator replaces the wing nut on the safety filter and constantly monitors air restriction. When service is required, it locks red. The SafetySignal requires no special fittings or adapters. Donaldson safety filters are designed to last through multiple primary filter change outs. The SafetySignal helps save time and money by preventing over-servicing.



SafetySignal™ Order Numbers

Part Number	For Air Cleaners	Fits Bolt	Washer Included
X004814	FTG 13" & 15" FHG12" & 14" FVG16"	7/16"-20 UNF	P111551
X004815	FTG11	7/16"-20 UNF	P101872
X004816	FVG14-16" STG12-16" & All SRG models	1/2"-13 UNC	P105740



Intake Accessories

Indicators



The Informer™ for Graduated, Continuous Readings



The Informer, when mounted on the air cleaner or the dashboard, provides a continuous reading whether the engine is running or is shut down. Reset button is on top. Kit includes full installation instructions and a P100089 safety filter fitting. For remote mounting, order a P105168 flange and a P105622 90° elbow.

The Mini-Informer™ for Light & Medium Trucks

The Mini-Informer restriction gauge is designed to mount in the plastic air cleaners of passenger cars, light trucks, and sport utility vehicles. It's an accurate, durable, easy-to-read "go/no go" style indicator, smaller than the original Informer.



Through the clear window, a green flag shows when air filter restriction is below the service point. When the restriction reaches its limits, an orange flag imprinted with "change filter" pops up.

The Mini-Informer mounts in the air cleaner ducting in a rubber grommet. Choose the model with the pre-set restriction limit that matches your engine manufacturer's recommended restriction maximum.

ServiSignal™ Mini Indicator

Small enough to fit just about anywhere (only 1.66" high), the Donaldson ServiSignal shows a highly visible, bright red flag in the full-view window when restriction limit is reached. Resets manually via top button after air cleaner service.



Kit includes 1/8" NPT threaded brass fitting for mounting on the air cleaner. For remote mount, also order P105168 flange. Hoses not included.

The Informer™

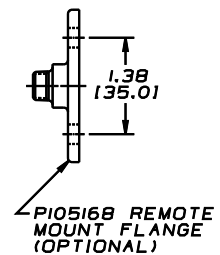
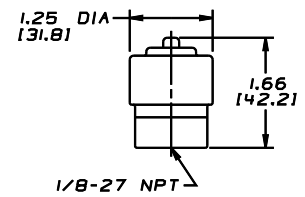
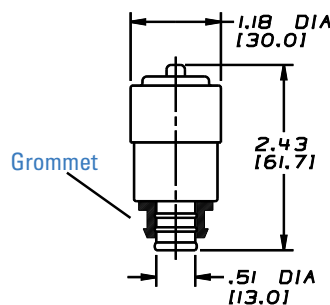
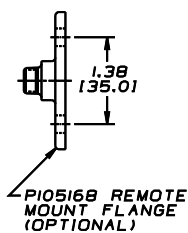
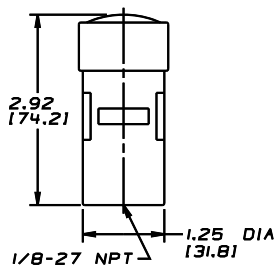
Gauge Only	Kit (gauge & fitting)	Restriction Limit
X002278	X002103	20" H ₂ O/5 kPa
X002277	X002102	25" H ₂ O/6.2 kPa
X002275	X002101	30" H ₂ O/7.5 kPa

The Mini Informer™

Gauge Only	Restriction Limit	Gauge & Grommet
	20" H ₂ O/5 kPa	X007275
X007335	25" H ₂ O/6.2 kPa	X007276
	30" H ₂ O/7.5 kPa	X007277

The ServiSignal™ Mini Informer™

Restriction Limit	Gauge Only	Kit (gauge & fitting)
15" H ₂ O/3.7 kPa	X002250	X002350
20" H ₂ O/5 kPa	X002251	X002351
25" H ₂ O/6.2 kPa	X002252	X002352
30" H ₂ O/7.5 kPa	X002254	X002354



Hand tighten filter service indicators (30-40 lbs./inch maximum).