

With the multitude of sizes and styles of air cleaners available from Donaldson, how do you choose the proper model that will reliably eliminate dirt for best engine protection and give you maximum service life?

Here is a sensible selection process:

1. Determine the combustion air requirements of the engine. This information, expressed in cfm, is shown in this catalogue. (To ensure having the most up to date information, check with your engine manufacturer.) In the air cleaner selection process, the cfm requirement is used in conjunction with the recommended air inlet restriction limits. A simple calculation for working out the air flow capacity is:

$$\text{CFM} = \text{Engine Horse Power (H.P.)} \times 2.5$$

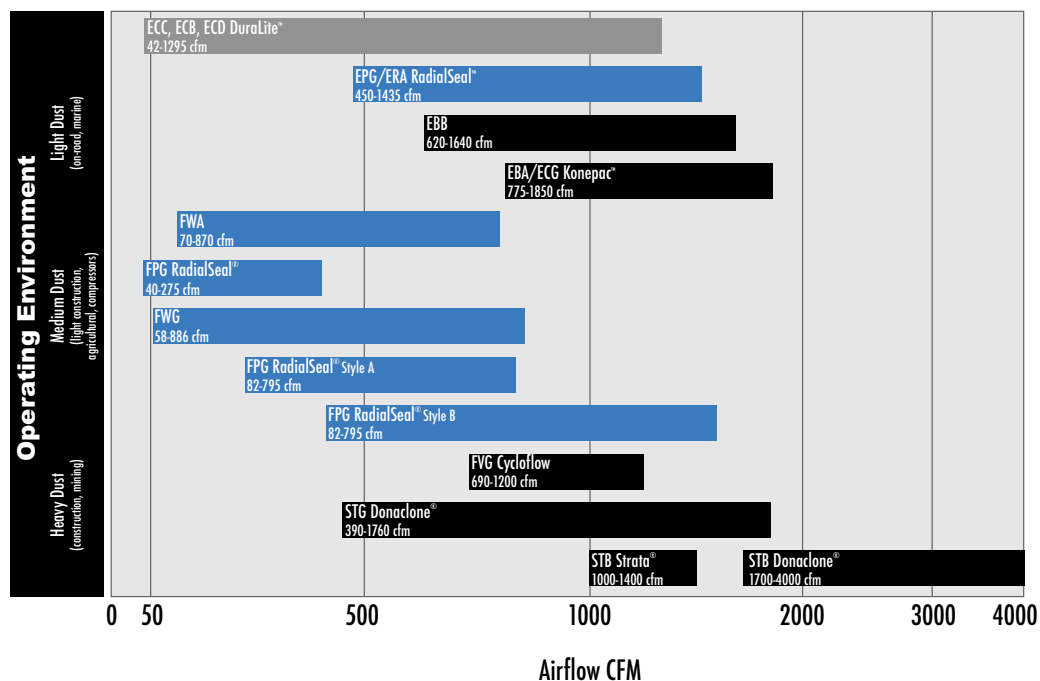
2. Determine the type of machine and its use or the environment in which it will operate. For example, a standby hospital generator set would probably see light dust, whereas a rock crusher would almost always be surrounded by an extremely heavy dust concentration of large dirt particles.

3. Select an air cleaner series using the selection chart below. This correlates the cfm requirements of your engine with the dust severity level of your environment. You can also review air cleaner models by air flow pattern. Dimensional limitations, locations of the inlet and outlet, and mounting configurations are appropriately considered at this step. These parameters are sometimes critical and may lead you to an alternative model or series that is better suited to your application.

4. Choose a specific air cleaner model from the series that you identified in step 3 as being suitable for your requirements.

5. Choose intake accessories. Even though they're called accessories, things like inlet hoods, mounting bands, rubber connectors, and clamps are an integral and important part of the entire intake filtration system. This catalogue includes accessories for all types of operating environments.

For a variation on the air cleaners you find in this catalogue, a custom designed filtration system, or an entirely new air cleaner design (with usage of more than 100 pieces annually), please call your regular supplier of Donaldson products.



Air Cleaner Selection

By Air Flow Pattern

Air Cleaner Series Prefix ID Numbers

Each Donaldson Air Cleaner is designed to service a specific set of dust conditions to ensure that maximum filter performance and life is achieved. Donaldson's part numbering system reflects the series and airflow pattern of the cleaner.

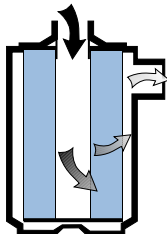
E Series = Light Dust Conditions

F Series = 2-stage filtration for Medium to Heavy Duty Conditions

S Series = Donaldson Series Air Cleaners for Heavy Dust Conditions

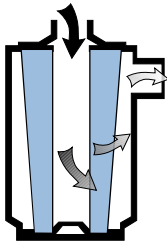
A Airflow

Air in the End, Out the Side



Radial Seal - ERA for Light Dust Conditions

Choose from two housing styles and two finishes: bright stainless and black. Classic cylindrical design, cowl-mounted for vertical installation. Airflows to 1435 cfm.



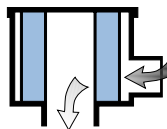
Axial Seal - EBA Konepac™ for Light Dust Conditions

Same housing as original EBA but with cone shaped filter (Konepac), can be mounted either horizontally or vertically. Airflows to 1850 cfm.

Radial Seal Style upgrade path: ERA

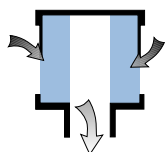
B Airflow

Air in the Side, Out the End



Axial Seal - EBB for Light Dust Conditions

A small housing with higher dust holding capacity, and comparable airflow. Side inlet, horizontal installation. Mount underhood or behind cab. Airflows to 1640 cfm.

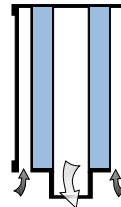


Disposable - ECB for Light Dust Conditions

Disposable, small, lightweight and unitised (housing and filter in one). For small 2-3 cylinder, high-vibration engines. Can be vertically or horizontally mounted. Airflows to 1295 cfm.

C Airflow

Air in the End, Out the Same End

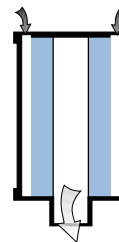


Disposable - ECC for Light Dust Conditions

Disposable, small, lightweight and unitised (housing and filter in one). For small 2-3 cylinder engines. Can be vertically or horizontally mounted. Airflows to 760 cfm.

D Airflow

Air in the End, Out the Opposite End



Disposable - ECD for Light Dust Conditions

Disposable, small, lightweight and unitised (housing and filter in one). For small 2-3 cylinder engines. Can be vertically or horizontally mounted. Airflows to 185 cfm.

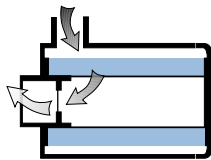
Understanding Air Flow for Air Cleaners

Donaldson has air cleaner housings that work in a variety of dust conditions and air flow patterns (A - D, and G). For improved filtration reliability and quicker filter service compared to older axial seal style air cleaners, Donaldson recommends installing a radial seal style air cleaners whenever possible.

- A = Air in the End, Out the Side
- B = Air in the Side, Out the End
- C = Air in the End, Out the Same End
- D = Air in the End, Out the Opposite End
- G = Air in the Side, Out the End

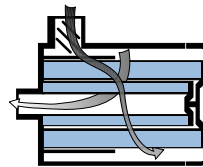
G Airflow

Air in the Side, Out the End



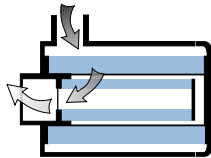
Radial Seal - EPG for Light Dust Conditions

Single stage filtration. Smaller than ECG and lightweight, sturdy, and totally plastic. Horizontal installation. Airflows to 1325 cfm.



Axial Seal - FVG for Medium Dust Conditions

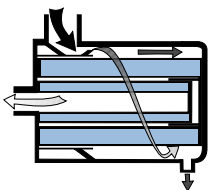
A heavy-duty housing, our FVG has high airflow throughput and safety filter. Adds a vane in the inlet for a more aggressive first stage of cleaning. Horizontal mounting required. Airflows of 690 to 1200 cfm.



Radial Seal - FPG for Medium Dust Conditions

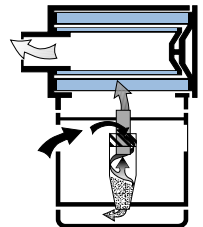
The first fully plastic air cleaner in our two-stage filtration line. Tangential inlet, with or without safety element, body diameters from 4" to 8". Handles airflows of 55 to 275 cfm. Can be mounted horizontal, vertical or at an angle.

For Heavy (Severe) Dust Conditions



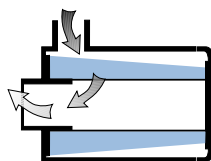
Radial Seal - FRG for Medium & Heavy Dust Conditions

This two stage filtration housing is available in body diameters of 5" to 18". This style is the ideal upgrade from our older FWA, FWG, FHG and FTG housings. Horizontal mount required. Style A handles airflows up to 795 cfm and our new Style B handles airflows up to 1600 cfm.



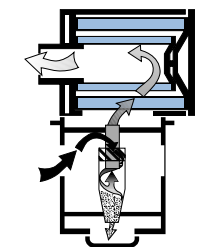
Axial Seal - STG

The efficient "T" design of the STG allows high airflow and strong two-stage filtration. Two styles available - one with a peripheral inlet and another with a tubular inlet. Handles airflows from 390 to 1760 cfm. Can be mounted vertically or horizontally.



Axial Seal - ECG Konepac™ for Light Dust Conditions

Second generation Konepac with a cone-shaped filter has a long and narrow housing. Designed for horizontal installation; usually mounted under hood or behind cab. Airflows to 1600 cfm.



Axial Seal - SRG

Donaldson's largest two-stage engine air cleaner, designed for the engines on large equipment. Handles airflows of 1700 to 4080 cfm. The best protection for 500 to 2000 HP diesel engines.

Radial Seal Style upgrade path: EPG

ECB DuraLite™

For Light Dust Conditions



When specifying a DuraLite Air Cleaner...

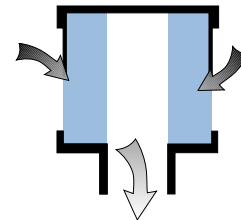
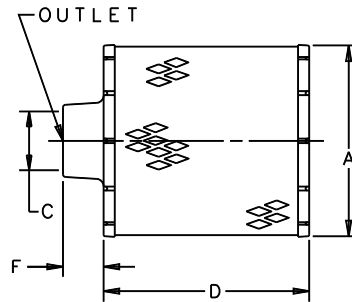
Determine the airflow requirements of your engine, then find the corresponding cfm airflow in the table below. The restriction numbers (shown in inches of water) indicate the approximate initial restriction of each model air cleaner at that cfm.

If there are two air cleaner models that fit your parameters, choosing the one with the lowest restriction will provide the longest filter service life. When calculating total initial restriction of the entire air intake system, include the restriction caused by ducting, elbows, pre-cleaners, etc.



Available DuraLite Media Types

- A= Standard media
- B= Treated to withstand higher humidity, most often used in marine applications
- C= Reinforced to withstand higher pulsation applications
- D= Designed for higher airflow/low dust applications...should NOT be used for normal engine operating environments



Airflow Pattern "B"
Air in the side, out the end.

ECB Specifications

Air Cleaner Models	Airflow CFM @			Body Dia. (A)	Outlet Dia. (C)	Length (D)	Outlet Length (F)	Media Type	Weight
	4"H2O	6"H2O	8"H2O						
B085001	275	335	390	8.50" 216mm	3.00" 76mm	11.00" 279mm	1.38" 35mm	A	4.2lbs 1.9kgs
B085008 (1)	175	250	300	8.75" 222mm	3.00" 76mm	8.5" 216mm	1.38" 35mm	A	5.5lbs 2.5kgs
B085011	280	400	470	8.50" 216mm	4.00" 102mm	11.00" 279mm	1.38" 35mm	A	4.2lbs 1.9kgs
B085046	280	400	470	8.50" 216mm	4.00" 102mm	11.00" 279mm	1.38" 35mm	B	4.2lbs 1.9kgs
B085048	275	335	390	8.50" 216mm	3.00" 76mm	11.00" 279mm	1.38" 35mm	B	4.2lbs 1.9kgs
B105002	400	580	710	10.50" 267mm	5.00" 127mm	15.00" 381mm	1.38" 35mm	C	5.9lbs 2.7kgs
B105003 (2)	365	430	470	10.50" 267mm	4.00" 102mm	10.50" 267mm	1.38" 35mm	C	3.6lbs 1.6kgs
B105006	450	590	680	10.50" 267mm	4.00" 102mm	10.50" 267mm	1.38" 35mm	A	5.2lbs 2.4kgs
B105020	380	440	480	10.50" 267mm	4.00" 102mm	10.50" 267mm	1.38" 35mm	B	3.6lbs 1.6kgs
B125003	830	1110	1295	12.50" 318mm	6.00" 152mm	15.0" 381mm	1.38" 35mm	C	7.1lbs 3.2kgs
B125005	800	1060	1250	12.50" 318mm	5.50" 140mm	9.0" 229mm	1.38" 35mm	D	5lbs 2.3kgs

Numbers in parenthesis indicate Application Notes. These numbers do not form part of the product/part number or ID
 1) Body is galvanised steel with 4" (254mm) dia.inlet on side
 2) Body is plastic with 4" (254mm) dia.inlet on side

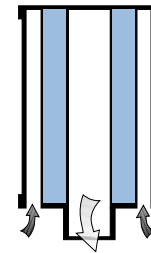
Donaldson recommends the use of a high torque hose clamp for all E Series DuraLite Air Cleaners. (up to 150 lbs.-in). This clamp eliminates the need for double clamping – order one for each DuraLite air cleaner.



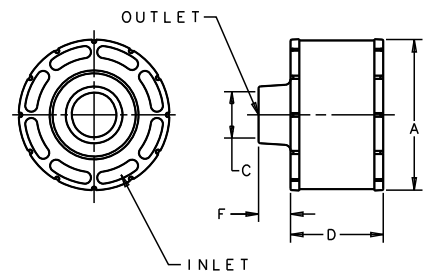
Media Types

- A= Standard media
- B= Treated to withstand higher humidity, most often used in marine applications

- C= Reinforced to withstand higher pulsation applications
- D= Designed for higher airflow/low dust applications... should NOT be used for normal engine operating environments



Airflow Pattern "C"
Air in the side, out the same end.



ECC Specifications

Air Cleaner Models	Airflow CFM @			Body Dia. (A)	Outlet Dia. (C)	Length (D)	Outlet Length (F)	Media Type	Weight
	4"H ₂ O	6"H ₂ O	8"H ₂ O						
C045001	42	55	64	4.50" 114mm	1.50" 38mm	4.50" 114mm	1.38" 35mm	C	0.6lbs 0.27kg
C045002	55	70	82	4.50" 114mm	1.50" 38mm	8.00" 203mm	1.38" 35mm	C	0.90lbs 0.40kgs
C055002	70	90	106	5.50" 140mm	1.75" 44mm	7.00" 178mm	1.38" 35mm	C	1.00lbs 0.45kgs
C055003	64	82	94	5.50" 140mm	1.75" 44mm	4.00" 102mm	1.38" 35mm	C	1.00lbs 0.45kgs
C065001	95	111	140	6.50" 165mm	2.00" 51mm	4.00" 102mm	1.38" 35mm	C	0.80lbs 0.36kgs
C065002	108	137	162	6.50" 165mm	2.00" 51mm	7.50" 191mm	1.38" 35mm	C	1.30lbs 0.60kgs
C065003	120	150	175	6.50" 165mm	2.25" 57mm	5.00" 127mm	1.38" 35mm	C	1.00lbs 0.45kgs
C065015	115	147	190	6.50" 165mm	2.00" 61mm	9.00" 229mm	1.38" 35mm	D	2.00lbs 0.90kgs
C085001	112	145	170	8.50" 216mm	2.50" 64mm	4.00" 102mm	1.38" 35mm	C	1.40lbs 0.64kgs
C085002	130	165	188	8.50" 216mm	2.50" 64mm	6.50" 165mm	1.38" 35mm	C	2.20lbs 1.00kgs
C085003	150	180	215	8.50" 216mm	3.00" 76mm	5.00" 127mm	1.38" 35mm	C	2.20lbs 1.00kgs
C085004	170	205	245	8.50" 216mm	3.00" 76mm	9.50" 241mm	1.38" 35mm	C	3.00lbs 1.40kgs
C085005	115	150	175	8.50" 216mm	2.50" 64mm	5.00" 127mm	1.38" 35mm	C	2.20lbs 1.00kgs
C085006	135	170	195	8.50" 216mm	2.50" 64mm	9.50" 241mm	1.38" 35mm	C	3.00lbs 1.4kgs
C085041 (1)	170	205	245	8.50" 216mm	3.00" 76mm	9.50" 241mm	1.38" 35mm	C	3.00lbs 1.4kgs
C085043 (1)	135	170	195	8.50" 216mm	2.50" 64mm	9.50" 241mm	1.38" 35mm	C	3.00lbs 1.40kgs
C105003	325	400	480	10.50" 267mm	4.00" 102mm	6.00" 152mm	1.38" 35mm	A	2.30lbs 1.00kgs
C105004	400	500	620	10.50" 267mm	4.00" 102mm	10.50" 267mm	1.38" 35mm	A	3.60lbs 1.60kgs
C105017 (1)	400	500	620	10.50" 267mm	4.00" 102mm	10.50" 267mm	1.38" 35mm	A	3.60lbs 1.60kgs
C125004	485	620	760	12.50" 318mm	5.00" 127mm	11.00" 279mm	1.38" 35mm	A	5.80lbs 2.60kgs

Numbers in parenthesis represent Application Notes. These numbers do not form part of the product/part number or ID.
1) Screen inlet deters rodent infestation

Donaldson recommends the use of a high torque hose clamp for all E Series DuraLite Air Cleaners. (up to 150 lbs.-in). This clamp eliminates the need for double clamping – order one for each DuraLite air cleaner.



Media Types

- A = Standard media
- B = Treated to withstand higher humidity, most often used in marine applications

C = Reinforced to withstand higher pulsation applications

D = Designed for higher airflow/low dust applications... should NOT be used for normal engine operating environments

ERA: Two Styles and Two Finishes

Both with the Superior Protection of RadialSeal™ Sealing Technology

Whether you're "dressing up" your rig or in need of a new vertically (cowl) mounted air cleaner for your truck, the ERA radial seal air cleaner series delivers a reliable filtration system for your engine and simplifies filter service.

Applications

- Vertical installation, mounted on the side of the truck
- Primarily for on-highway trucks
- Can be installed on driver's side or passenger side
- Two air cleaner designs:

ERA Style 1 models allow up to 1435 cfm airflow throughput per air cleaner

ERA Style 2 models allow up to 1350 cfm airflow throughput per air cleaner

(Mounting the unit directly to the engine is not recommended)

Air Cleaner Features

- ERA Style 1
 - Bright stainless steel finish retains its finish through all types of weather
 - Available in 13" (330mm) and 15" (381mm) diameter sizes
 - Perforated inlet hood protects engine from ingestion of rain, snow and large debris
- ERA Style 2
 - Black, corrosion and chemical resistant polymer paint retains its finish through all types of weather (one model has bright stainless finish)
 - Available in 11" (279mm), 13" (330mm) and 15" (381mm) diameter sizes
 - Direct replacement to the EBA axial style air cleaner
 - Does not include an inlet hood
 - Double airflow throughput by using two air cleaners
 - Vacuator™ Valve automatically expels moisture from bottom of housing



ERA-Style 1



The ERA-Style 1 model has a contemporary style and an attractive, mirror-finish stainless steel perfectly complement the look of any truck and enhance its overall appearance.



ERA-Style 2

Available in black and bright finish



Our classic EBA cowl-mounted air cleaner is now available in the radial seal design as the ERA-Style 2. Available in black or bright stainless finish.

Filter Features

- The filters feature high tech resilient urethane ends that hold the filter firmly in place and maintain a tight, reliable seal – reducing the number of components and ensuring reliability
- Donaldson Endurance™ Extended service, high efficiency primary filters available on some models.

**THIS PRODUCT CAN
BE FITTED WITH
Donaldson®
ENDURANCE®
HIGH PERFORMANCE
ELEMENTS**
Call the Donaldson Customer Service Team
for further information!
Phone: +61 (0) 2 4350 2000

Protected internationally by patents, trademarks, and design registrations, both issued and pending.

ERA RadialSeal®

For Light Dust Conditions

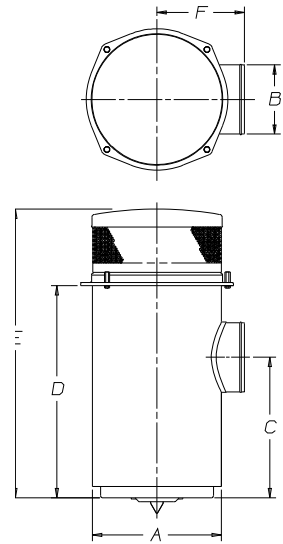


Style 1 - Chrome Finish

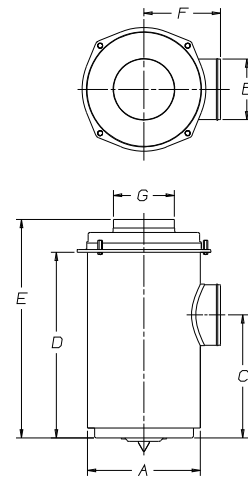
Style 2 -

Available in Black or Bright Stainless Finish.
Formerly known as EBA Housing, Donaldson's
Classic cowl-mounted Air Cleaner

Style 1 Spec Illustration

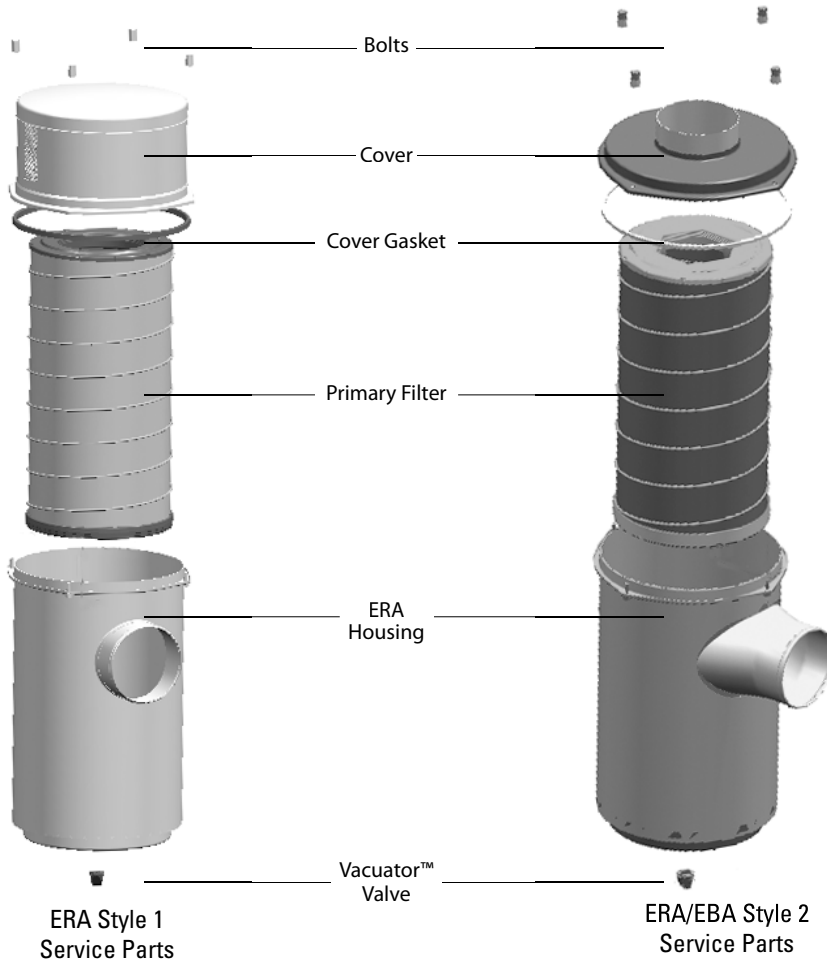


Style 2 Spec Illustration



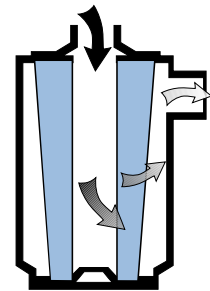
ERA & EBA Specifications

Part Number	Initial Restriction		Body Diameter (A)	Outlet Diameter (B)	Outlet Location (C)	Body Length (D)	Overall Length (E)	Outlet Location (F)	Inlet Diameter OD (G)	Service Clearance	Service Indicator Tap	Weight
	6"H2O	8"H2O										
ERA - Style 1 - Bright Finish with perforated inlet hood												
A130101	1025	1120	13" 330mm	7" 178mm	17.15" 436mm	21.4" 544mm	27.58" 701mm	8.82" 224mm		22.5" 572mm	No	36lbs 16kg
A150132	1200	1325	15" 381mm	7" 178mm	19.3" 490mm	23.4" 594mm	32.59" 828mm	9.82" 250mm		24.5" 622mm	No	44lb 20kg
ERA - Style 2 - Black Finish with no inlet hood (Except A130098 which has Bright Finish)												
A110052	750	870	11" 279mm	5.5" 140mm	17.07" 434mm	20.39" 518mm	23.15" 588mm	9.36" 238mm	6" 152mm	20" 508mm	Yes	24lb 11kg
A130115	760	880	13" 330mm	6" 152mm	16.69" 424mm	20.19" 513mm	22.95" 265mm	10.42" 265mm	6" 152mm	20" 508mm	Yes	29lb 13kg
A130098	825	950	13" 330mm	7" 178mm	14.19" 360mm	21.4" 544mm	25.21" 640mm	8.82" 224mm	7" 178mm	22.5" 572mm	No	33lb 15kg
A150141	760	880	15" 381mm	6" 152mm	16.9" 429mm	20.38" 518mm	23.14" 588mm	11.9" 302mm	6" 152mm	20" 508mm	Yes	32lb 15kg
A150138	1045	1205	15" 381mm	7" 178mm	19.25" 489mm	24.38" 619mm	27.69" 703mm	11.9" 302mm	7" 178mm	24" 610mm	Yes	36lbs 16kg
EBA Stainless Steel with Hood												
X006383	825	950	14" 360mm	7" 178mm	18.15" 461mm	22.4" 630mm	26.21" 689mm	8.82" 224mm	7" 178mm	22.5" 572mm	No	33lb 15kg



**THIS PRODUCT CAN
BE FITTED WITH
Donaldson®
ENDURANCE®
HIGH PERFORMANCE
ELEMENTS**
Call the Donaldson Customer Service Team
for further information!
Phone: +61 (0) 2 4350 2000

Airflow pattern "A"
Air in the end, out the side.



ERA/EBA Service Parts

Part Number	Primary Filter	Cover	Bolt	Retaining Ring	Gasket Cover	Mounting Band (1)	Vacuator Valve	Nut, Plastic	Nut, Metal
A110052	P544741 (2)	P544744	P119463	P129469	P155211	P004079	P149099	P119325	
A130098	P534816 (2)	P534818	P540732	P129469	P155264 (3)	P522439	P149099		P534934
	EAF5100 (4)								
A130101	P534816 (2)	P535239	P540732	P129469	P155264 (3)	P522439	P149099		P534934
	EAF5100 (4)								
A130115	P544950 (2)	P544878	P119463	P129469	P155264	P013722	P149099	P119325	
A150132	P534925 (2)	P534926	P540732	P129469	P535559 (3)	P524552	P149099		P534934
	EAF5101 (4)								
A150138	P544301 (2)	P544238	P119463	P129469	P535559	P016845	P149099	P119325	
A150141	P544243 (2)	P544827	P119463	P129469	P535559	P016845	P149099	P119325	

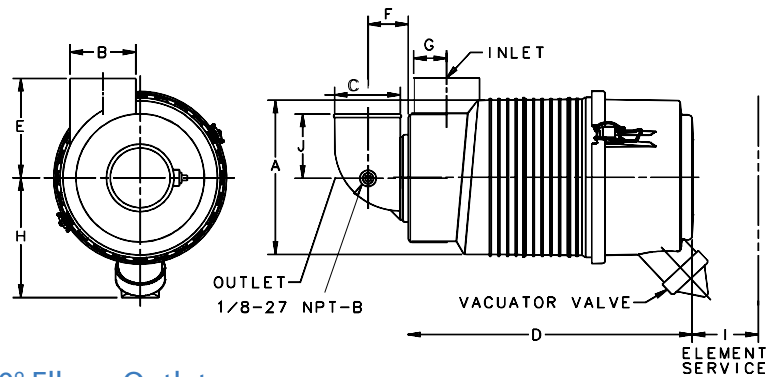
Numbers in parenthesis indicate Application Notes. These numbers are not part of the product/part number ID.
 1) Two Mounting Bands are required for proper installation
 2) Shipped with air cleaner initially
 3) Included with each replacement filter
 4) Part number indicates Donaldson Endurance brand filter



Models with 90 degrees Outlet Tube



Spec Illustration - Models with 90 degrees Outlet Tube

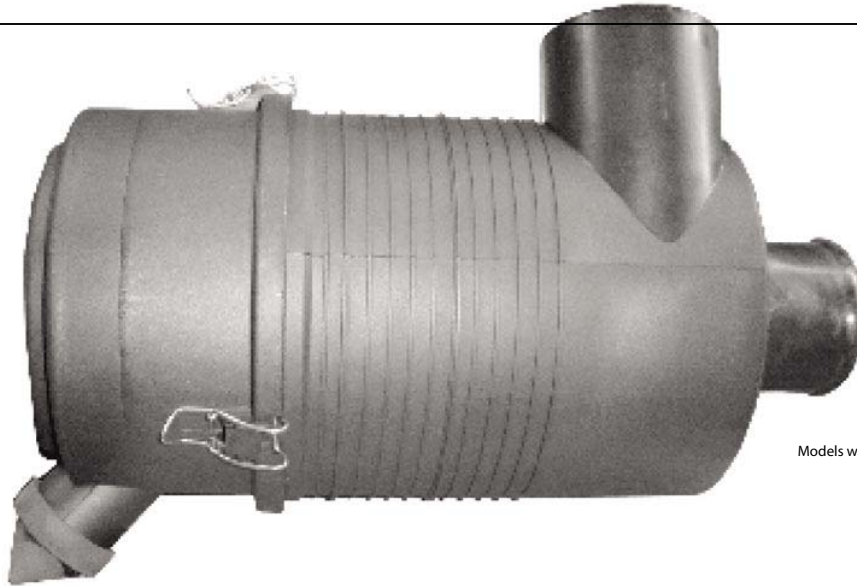


FPG Specifications - Models with 90° Elbow Outlet

Air Cleaner Models	with Safety Filter?	Initial Restriction	Airflow CFM@	Body Dia.	Inlet Dia.	Outlet Diameter	Housing Length	Inlet Height	Outlet Length	Inlet Location	Center Line to valve	Service Clear.	Weight	Restr. Tap Loc.
		6"H2O	8"H2O	(A)	(B)	(C)	(D)	(E)	(F)	(G)	(H)	(I)		(J)
G042545	no	55	65	4.8" 122mm	1.75" 44mm	1.75" 44mm	7.45" 189mm	3.27" 83mm	1.23" 31mm	1.48" 38mm	3.96" 101mm	5.39" 137mm	1.3lbs 0.6kg	1.94" 48mm
G057512	yes	65	80	5.75" 146mm	2.0" 51mm	2.0" 51mm	10.87" 276mm	3.82" 97mm	1.36" 35mm	1.65" 42mm	4.66" 118mm	10.68" 271mm	2.5lbs 1.1kg	2.6" 66mm
G057514	no	80	95	5.75" 146mm	2.0" 51mm	2.0" 51mm	10.87" 276mm	3.82" 97mm	1.36" 35mm	1.65" 42mm	4.66" 118mm	7.95" 202mm	2.2lbs 1.0kg	2.6" 66mm
G065411	yes	110	125	6.74" 171mm	2.5" 64mm	2.5" 64mm	12.61" 320mm	4.41" 112mm	1.6" 41mm	1.7" 43mm	5.35" 136mm	12.24" 311mm	3.9lb 1.8kg	3.06" 78mm
G065433	no	120	135	6.74" 171mm	2.5" 64mm	2.5" 64mm	12.61" 320mm	4.41" 112mm	1.6" 41mm	1.7" 43mm	5.35" 136mm	8.5" 216mm	3.5lb 1.6kg	3.06" 78mm
G070018	yes	125	145	7.19" 183mm	3.0" 76mm	3.0" 76mm	13.09" 332mm	4.88" 124mm	1.88" 48mm	1.72" 44mm	5.45" 137mm	12.5" 318mm	4.3lb 1.9kg	3.62" 92mm
G070020	no	160	185	7.19" 183mm	3.0" 76mm	3.0" 76mm	13.09" 332mm	4.88" 124mm	1.88" 48mm	1.72" 44mm	5.45" 137mm	8.87" 225mm	3.8lb 1.7kg	3.62" 92mm
G082526	yes	165	190	8.35" 212mm	3.75" 95mm	3.5" 89mm	14.23" 361mm	5.43" 138mm	2.11" 54mm	2.1" 53mm	6.01" 153mm	13.91" 353mm	5.8lb 2.6kg	4.13" 105mm
G082528	no	205	245	8.35" 212mm	3.75" 95mm	3.5" 89mm	14.23" 361mm	5.43" 138mm	2.11" 54mm	2.1" 53mm	6.01" 153mm	9.57" 243mm	5.2lb 2.3kg	4.13" 105mm
G090219*	yes	256	317	9.53" 242mm	4.49" 114mm	3.5" 89mm	15.76" 400mm	6.78" 172mm	2.11" 54mm	2.42" 62mm	10.44" 260mm	14.56" 370mm	8.8lb 4kg	4.12" 105mm
G100317*	yes	247	282	10.56" 268mm	4.49" 114mm	3.99" 102mm	16.78" 432mm	7.23" 185mm	3.45" 88mm	2.78" 71mm	10.60" 269mm	15.35" 390mm	11.1lb 5.05kg	4.79" 120mm

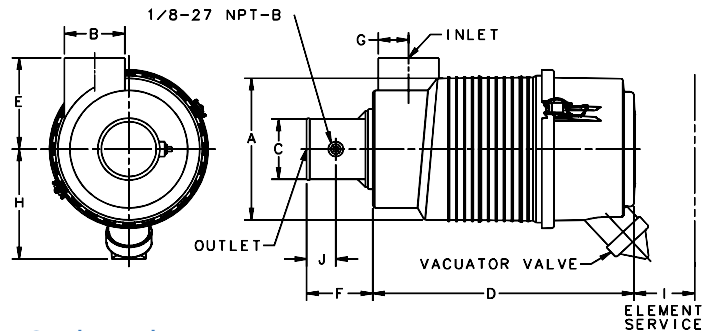
FPG RadialSeal®

For Medium Dust Conditions



Models with Straight Outlet Tube

Spec Illustration - Models with Straight Outlet Tube

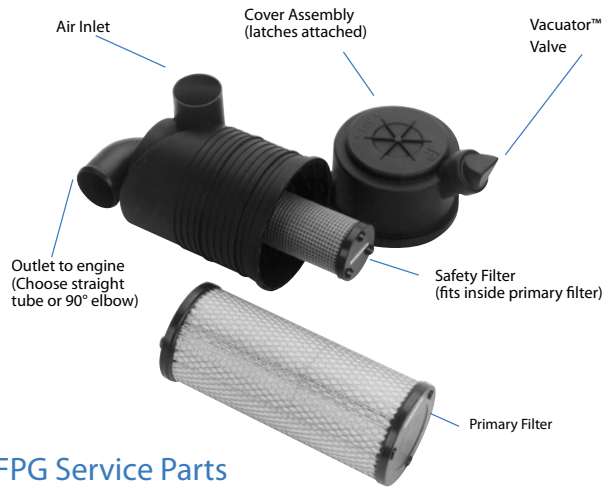


FPG Specifications - Models with Straight Outlet Tube

Air Cleaner Models	with Safety Filter?	Initial Restriction Airflow CFM @ 6"H2O 8"H2O	Body Dia. (A)	Inlet Dia. (B)	Outlet Diameter (C)	Housing Length (D)	Inlet Height (E)	Outlet Length (F)	Inlet Location (G)	Center Line to valve (H)	Service Clear. (I)	Weight	Restr. Tap Loc. (J)	
G042544	no	55	65	4.8" 122mm	1.75" 44mm	1.75" 44mm	7.45" 189mm	3.27" 83mm	3.24" 82mm	1.48" 38mm	3.96" 101mm	5.39" 137mm	1.3lbs 0.6kg	1.88" 48mm
G057511	yes	65	80	5.75" 146mm	2.0" 51mm	2.0" 51mm	10.87" 276mm	3.82" 97mm	3.25" 83mm	1.65" 42mm	4.66" 118mm	10.68" 271mm	2.5lbs 1.1kg	1.88" 48mm
G057513	no	80	95	5.75" 146mm	2.0" 51mm	2.0" 51mm	10.87" 276mm	3.82" 97mm	3.25" 83mm	1.65" 42mm	4.66" 118mm	7.95" 202mm	2.2lbs 1.0kg	1.88" 48mm
G065424	yes	110	125	6.74" 171mm	2.5" 64mm	2.5" 64mm	12.61" 320mm	4.41" 112mm	3.23" 82mm	1.7" 43mm	5.35" 136mm	12.24" 311mm	3.9lb 1.8kg	1.63" 41mm
G065432	no	120	135	6.74" 171mm	2.5" 64mm	2.5" 64mm	12.61" 320mm	4.41" 112mm	3.23" 82mm	1.7" 43mm	5.35" 136mm	8.5" 216mm	3.5lb 1.6kg	1.63" 41mm
G070017	yes	125	145	7.19" 183mm	3.0" 76mm	3.0" 76mm	13.09" 332mm	4.88" 124mm	3.26" 83mm	1.72" 44mm	5.45" 137mm	12.5" 318mm	4.3lb 1.9kg	1.88" 48mm
G070019	no	160	185	7.19" 183mm	3.0" 76mm	3.0" 76mm	13.09" 332mm	4.88" 124mm	3.27" 83mm	1.72" 44mm	5.45" 137mm	8.87" 225mm	3.8lb 1.7kg	1.88" 48mm
G082525	yes	165	190	8.35" 212mm	3.75" 95mm	3.5" 89mm	14.23" 361mm	5.43" 138mm	3.27" 83mm	2.1" 53mm	6.01" 153mm	13.91" 353mm	5.8lb 2.6kg	1.91" 49mm
G082527	no	205	245	8.35" 212mm	3.75" 95mm	3.5" 89mm	14.23" 361mm	5.43" 138mm	3.27" 83mm	2.1" 53mm	6.01" 153mm	9.57" 243mm	5.2lb 2.3kg	1.91" 49mm
G090225*	yes	256	300	9.53" 242mm	4.49" 114mm	3.99" 102mm	15.76" 400mm	6.78" 172mm	3.43" 87mm	2.42" 62mm	10.44" 260mm	14.56" 370mm	8.7lb 3.95kg	n/a
G100319*	yes	259	297	10.56" 268mm	4.49" 114mm	3.99" 102mm	16.78" 432mm	7.23" 185mm	3.45" 88mm	2.78" 71mm	10.60" 269mm	15.35" 390mm	10.9lb 4.95kg	n/a

* Models with Twist Off Cover Design (no latches)

- Numbers in parenthesis indicate Application Notes. These numbers are not part of the product/part number or ID:
- 1) Safety filters: All FPG models can accept safety filters. This table shows which air cleaner models are shipped with a safety filter installed. If you want to add a safety filter to an existing model that did not originally have one, order the safety filter listed in Service Parts table on the next page
 - 2) Check the details for Mounting Band specifications and ordering information as featured in this catalogue.
 - 3) Inlet hoods: A plastic inlet stack up to 18" (457mm) tall may be added, supporting a plastic inlet hood. See the Accessories section for information on optional inlet hoods and filter service indicators. Warning: Do not add a pre-cleaner or any intake accessory other than a lightweight inlet hood. Use of unapproved intake accessories will void your Donaldson Warranty.
 - 4) Service Indicators: See the Accessories section for information on filter service indicators



THIS PRODUCT CAN BE FITTED WITH Donaldson® ENDURANCE™ HIGH PERFORMANCE ELEMENTS
 Call the Donaldson Customer Service Team for further information!
 Phone: +61 (0) 2 4350 2000

FPG Service Parts

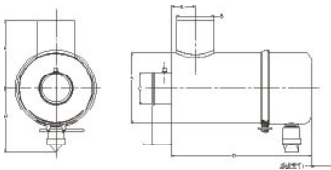
Air Cleaner Models	Straight outlet	90° elbow outlet	filter primary (see Note 1)	filter safety (see Note 2)	Vacuator™ Valve (see Note 3)	cover	latch	Polymer mounting band (see Note 4)	Metal mounting band
G042544	yes	no	P822686	P535396 optional	P522958	P533685	P538928	P777151	H008442
G042545	no	yes	P822686	P535396 optional	P522958	P533685	P538928	P777151	H008442
G057511	yes	no	P821575	P822858 std	P522958	P533761	P538928	P777730	H008443
G057512	no	yes	P821575	P822858 std	P522958	P533761	P538928	P777730	H008443
G057513	yes	no	P821575	P822858 optional	P522958	P533761	P538928	P777730	H008443
G057514	no	yes	P821575	P822858 optional	P522958	P533761	P538928	P777730	H008443
G065411	no	yes	P822768	P822769 std	P158914	P539422	P538928	P778810	H008444
G065424	yes	no	P822768	P822769 std	P158914	P539422	P538928	P778810	H008444
G065432	yes	no	P822768	P822769 optional	P158914	P539422	P538928	P778810	H008444
G065433	no	yes	P822768	P822769 optional	P158914	P539422	P538928	P778810	H008444
G070017	yes	no	P827653	P829332 std	P158914	P536202	P538928	P777731	H002070
G070018	no	yes	P827653	P829332 std	P158914	P536202	P538928	P777731	H002070
G070019	yes	no	P827653	P829332 optional	P158914	P536202	P538928	P777731	H002070
G070020	no	yes	P827653	P829332 optional	P158914	P536202	P538928	P777731	H002070
G082525	yes	no	P828889	P829333 std	P158914	P534048	P538928	P777732	
G082526	no	yes	P828889	P829333 std	P158914	P534048	P538928	P777732	
G082527	yes	no	P828889	P829333 optional	P158914	P534048	P538928	P777732	
G082528	no	yes	P828889	P829333 optional	P158914	P534048	P538928	P777732	
G090219*	no	yes	P780522	P780523 std	P776008	P780524	not applicable	P780532	
G090225*	yes	no	P780522	P780523 std	P776008	P780524	not applicable	P780532	
G100317*	no	yes	P781039	P777639 std	P776008	P780578	not applicable	P780594	
G100319*	yes	no	P781039	P777639 std	P776008	P780578	not applicable	P780594	

* Models with Twist Off Cover Design (no latches)
 Numbers in parenthesis indicate Application Notes. These numbers are not part of the product/part number or ID:
 1) Shipped with air cleaner initially
 2) Where 'std' is listed, indicates filter was shipped with cleaner initially. Where 'optional' is listed, indicates that a Safety Filter is designed to fit this air cleaner but is not originally shipped with it (NB, adding a safety filter will decrease the maximum airflow throughput)
 3) Replacement Cover assembly includes latches but no Vacuator™ Valve
 4) Order one Mounting Band per FPG air cleaner

OBSOLESCENCE NOTICE: FHG AIR CLEANERS NO LONGER AVAILABLE. THE FHG RANGE OF AIR CLEANER HOUSINGS HAVE BEEN SUPERCEDED BY THE FRG & FPG RANGE OF AIR CLEANER HOUSINGS.

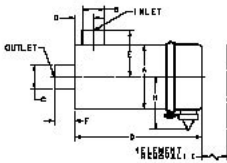
CHECK THE TABLE BELOW FOR CORRECT UPGRADE PATH.

NEED HELP? CONTACT DONALDSON CUSTOMER SERVICE OR CONSULT YOUR DONALDSON REPRESENTATIVE FOR A SUITABLE REPLACEMENT.



FRG Specification Illustrations Style A - Bolt/Clamp Service Cover

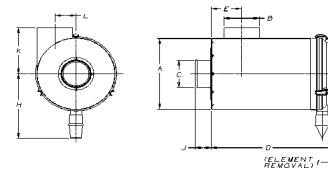
FHG Style A
Dual Element, with or without Vacuator™ Valves



The FRG Style A series replaces Donaldson's obsolete FHG series in size and airflow capacity.

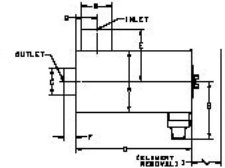


While it looks like an axial seal air cleaner on the outside, this new style housing is equipped with a radial seal style primary filter and an optional safety filter. Easy to service, one wing-bolt clamp to undo to access filter(s).



FRG Specification Illustrations Style B - Latch Service Cover

FHG Style B
Tube for Vacuator™ Valves built into body of air cleaner



The FRG Style B series replaces Donaldson's obsolete FTG and FHG series in size and airflow capacity



Injection-moulded endcap, made of specially-engineered resins for high strength and durability, serves as the service cover. Filter changeout is easier than ever – just unsnap the latches to access the filter!

Recommended Upgrade Path for FHG Style Air Cleaners

Current FHG	Upgrade	Type	Style
G065113	G065424	Straight Outlet	FPG
	G065411	90 Degree Elbow Outlet	FPG
G065212	G065424	Straight Outlet	FPG
	G065411	90 Degree Elbow Outlet	FPG
G080195	G082527	Straight Outlet	FPG
	G082528	90 Degree Elbow Outlet	FPG
G080200	G082525	Straight Outlet	FPG
	G082526	90 Degree Elbow Outlet	FPG
G100028	G100398		FRG A
G100029*	G100395		FRG A
G100035	G100398		FRG A
G100036*	G100395		FRG A
G120012	G120417		FRG A
G120014	G120415		FRG A
G120036	G120415		FRG A
G120037	G120417		FRG A
G140022	G140523		FRG A
G140023	G140526		FRG A
G140054	G140523		FRG A
G140055	G140526		FRG A
G160048	G160679		FRG A
G160078	G160679		FRG A
G160049	G150092		FRG B

*Alternative Upgrade Options are available.

G100029 & G100036 can be upgraded to G100319 FRG Style B

FHG Service Parts

Air Cleaner Models	Element Assy	Safety Element	Wing Nut	Gasket washer	Cup clamp	Cup gasket	Baffle Assembly	Standard cup	Horizontal Vacuator cup
G06	P182062	P119539	P102144	P101872	P002940	none	P102510	P102805	P103836
G08	P182059	P112212	P102144	P101872	P003951	none	P102980	P103113	P103837
G10	P182064	P119375	P102144	P101872	P106071	P101401	P103135	P103519	P103827
G12	P182034	P119374	P102144	P111551	P100808	P017804	P106329	P106589	P109296
G14	P182046	P119373	P102144	P111551	P100866	P017335	P106771	P106773	P109297
G16	P182002	P119372	P102144	P111551	P100789	P017336	P106637	P106639	P106952

Please Note: Vacuator model air cleaners come equipped with P103198 Vacuator™ Valve

**OBSOLESCENCE NOTICE: FHG AIR CLEANERS NO LONGER AVAILABLE.
CHECK THE TABLE FOR CORRECT UPGRADE PATH.**

FHG Specification Information below presented for reference only.

FHG Specifications

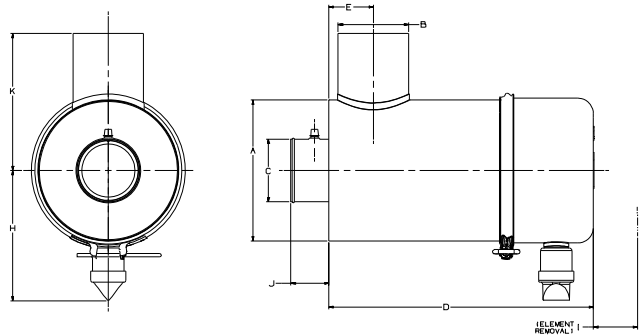
Air Cleaner Models	with Safety Filter?	Initial Restriction Airflow CFM @		Body Dia. (A)	Inlet Dia. (B)	Outlet Diameter (C)	Housing Length (D)	Inlet Height (E)	Outlet Length (F)	Inlet Location (G)	Center Line to valve (H)	Service Clear. (I)	Weight
		6"H2O	8"H2O										
6" Diameter Housings													
G065113	yes	128	148	6.55" 166mm	3.00" 76mm	3.00" 76mm	18.22" 463mm	6.38" 162mm	2.22" 56mm	1.92" 49mm	(2)	12.31" 313mm	11lb 5kg
G065212	yes	128	148	6.55" 166mm	3.00" 76mm	3.00" 76mm	17.85" 453mm	6.38" 162mm	2.22" 56mm	1.92" 49mm	7.12" 181mm	12.97" 329mm	11lb 5kg
8" Diameter Housings													
G088013	yes	180	200	8.00" 203mm	3.00" 76mm	3.00" 76mm	18.00" 457mm	7.00" 178mm	2.22" 56mm	2.6" 66mm	(2)	14.9" 378mm	16lb 7.2kg
G088010	yes	180	200	8.00" 203mm	3.00" 76mm	3.00" 76mm	18.00" 457mm	7.00" 178mm	2.22" 56mm	2.6" 66mm	(2)	14.9" 378mm	16lb 7.2kg
10" Diameter Housings													
G100028	no	345	405	10.19" 259mm	4.50" 114mm	5.00" 127mm	21.00" 533mm	8.09" 205mm	2.10" 53mm	3.38" 86mm	(2)	13.06" 332mm	22lb 10kg
G100029	yes	285	333	10.19" 259mm	4.50" 114mm	5.00" 127mm	21.00" 533mm	8.09" 205mm	2.10" 53mm	3.38" 86mm	(2)	13.06" 332mm	24lb 10.8kg
G100035	no	345	405	10.19" 259mm	4.50" 114mm	5.00" 127mm	21.00" 533mm	8.09" 205mm	2.10" 53mm	3.38" 86mm	8.96" 228mm	13.06" 332mm	23lb 10.4kg
G100036	yes	285	333	10.19" 259mm	4.50" 114mm	5.00" 127mm	21.00" 533mm	8.09" 205mm	2.10" 53mm	3.38" 86mm	8.96" 228mm	13.06" 332mm	25lb 11.3kg
12" Diameter Housings													
G120012	no	435	510	11.81" 300mm	5.00" 127mm	5.00" 127mm	18.06" 459mm	8.92" 227mm	2.02" 51mm	4.69" 119mm	(2)	10.10" 257mm	28lb 12.7kg
G120014	yes	335	392	11.81" 300mm	5.00" 127mm	5.00" 127mm	18.06" 459mm	8.92" 227mm	2.02" 51mm	4.69" 119mm	(2)	10.10" 257mm	30lb 13.6kg
G120036	yes	335	392	11.81" 300mm	5.00" 127mm	5.00" 127mm	19.06" 484mm	8.92" 227mm	2.02" 51mm	4.69" 119mm	9.56" 243mm	9.10" 231mm	31lb 14.1kg
G120037	no	435	510	11.81" 300mm	5.00" 127mm	5.00" 127mm	19.06" 484mm	8.92" 227mm	2.02" 51mm	4.69" 119mm	9.56" 243mm	9.10" 231mm	29lb 13.1kg
14" Diameter Housings													
G140022	yes	520	605	14.00" 356mm	6.00" 152mm	6.00" 152mm	21.06" 535mm	10.12" 257mm	2.26" 57mm	5.28" 134mm	(2)	13.10" 333mm	44lb 20kg
G140023	no	560	670	14.00" 356mm	6.00" 152mm	6.00" 152mm	21.06" 535mm	10.12" 257mm	2.26" 57mm	5.28" 134mm	(2)	13.10" 333mm	41lb 18.6kg
G140054	yes	520	605	14.00" 356mm	6.00" 152mm	6.00" 152mm	22.06" 560mm	10.12" 257mm	2.26" 57mm	5.28" 134mm	1.72" 44mm	12.10" 307mm	45lb 20.4kg
G140055	no	560	670	14.00" 356mm	6.00" 152mm	6.00" 152mm	22.06" 560mm	10.12" 257mm	2.26" 57mm	5.28" 134mm	1.72" 44mm	12.10" 307mm	45lb 20.4kg
16" Diameter Housings													
G160048	yes	620	740	16.00" 406mm	7.00" 178mm	7.00" 178mm	23.04" 585mm	12.00" 305mm	2.29" 58mm	5.76" 146mm	(2)	15.10" 384mm	54lb 24.5kg
G160049	no	750	875	16.00" 406mm	7.00" 178mm	7.00" 178mm	24.04" 611mm	12.00" 305mm	2.29" 58mm	5.76" 146mm	11.72" 298mm	14.10" 358mm	50lb 22.7kg
G160057	no	750	875	16.00" 406mm	7.00" 178mm	7.00" 178mm	23.04" 585mm	12.00" 305mm	2.29" 58mm	5.76" 146mm	(2)	15.10" 384mm	49lb 22.2kg
G160078	yes	620	740	16.00" 406mm	7.00" 178mm	7.00" 178mm	24.04" 611mm	12.00" 305mm	2.29" 58mm	5.76" 146mm	1.72" 298mm	14.10" 358mm	55lb 25kg

Numbers in parenthesis indicate Application Notes. These numbers do not form part of the product/part number or ID.
 1) Safety filters: All FHG models can accept safety filters. This table shows which air cleaner models are shipped with a safety filter installed.
 2) These air cleaners do not have Vacuator™ Valve, so there is no 'H' dimension

FRG RadialSeal Style A



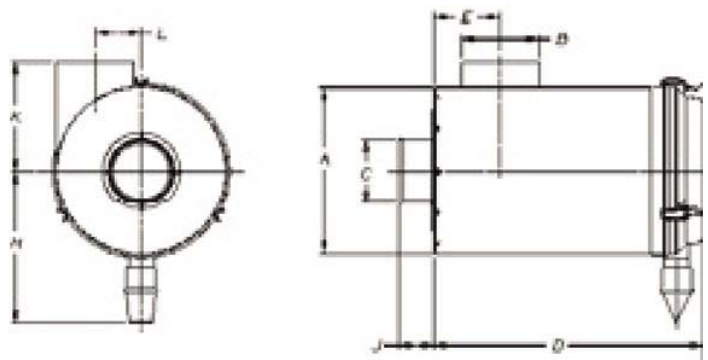
Specification Illustration: Style A



FRG RadialSeal Style B



Specification Illustration: Style B



FRG Specifications

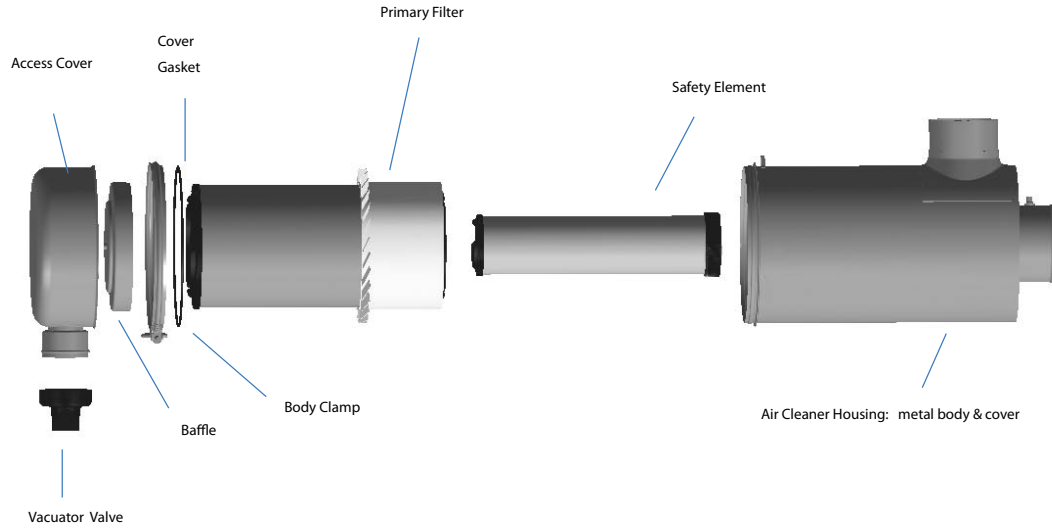
Air Cleaner Models	Initial Restriction Airflow CFM @ 6"H ₂ O	Initial Restriction Airflow CFM @ 8"H ₂ O	Body Dia. (A)	Inlet Dia. (B)	Outlet Dia. (C)	Length (D)	Inlet Location (E)	Center Line to valve (H)	Service Clear. (I)	Outlet Length (J)	Inlet Length (K)	Offset Inlet Location (L)	Offset Inlet Weight
FRG - Style A - Bolt/Clamp Service Cover													
G100395	283	332	10.19" 259mm	4.50" 114mm	5.00" 127mm	21.03" 534mm	3.38" 86mm	8.96" 228mm	13.06" 332mm	2.10" 53mm	8.09" 205mm		30.1lb 13.7kg
G100398	328	388	10.19" 259mm	4.50" 114mm	5.00" 127mm	21.03" 534mm	3.38" 86mm	8.96" 228mm	13.06" 332mm	2.10" 53mm	8.09" 205mm		28.6lb 13.0kg
G120415	315	350	12.00" 305mm	5.00" 127mm	5.00" 127mm	19.06" 484mm	4.69" 119mm	9.62" 244mm	9.10" 231mm	2.28" 58mm	8.92" 227mm		26.5lb 12.0kg
G120417	408	458	12.00" 305mm	5.00" 127mm	5.00" 127mm	19.06" 484mm	4.69" 119mm	9.62" 244mm	9.10" 231mm	2.28" 58mm	8.92" 227mm		28.1lb 12.7kg
G140523	486	570	14.00" 356mm	6.00" 152mm	6.00" 152mm	22.06" 560mm	5.28" 134mm	10.72" 272mm	12.10" 307mm	2.26" 57mm	10.12" 257mm		34.9lb 15.8kg
G140526	560	657	14.00" 356mm	6.00" 152mm	6.00" 152mm	22.06" 560mm	5.28" 134mm	10.72" 272mm	12.10" 307mm	2.26" 57mm	10.12" 257mm		33.3lb 15.1kg
G160679	590	700	16.00" 406mm	7.00" 178mm	7.00" 178mm	24.04" 611mm	5.76" 146mm	11.72" 298mm	14.10" 358mm	2.29" 58mm	12.00" 305mm		41.7lb 18.9kg
FRG Style B - Latch Service Cover													
G150092	715	805	15.00" 381mm	7.00" 178mm	6.00" 152mm	20.87" 530mm	5.51" 140mm	13.31" 338mm	19" 483mm	2.75" 70mm	9.50" 241mm	4.03" 102mm	30.0lb 13.61kg
G180031	1220	1420	18" 457mm	8.00" 203mm	8.00" 203mm	25.6" 650mm	5.04" 128mm	15.8" 401mm	28.62" 727mm	3.35" 85mm	11.42" 290mm	5.05" 128mm	44lb 19.9kg

FRG RadialSeal®

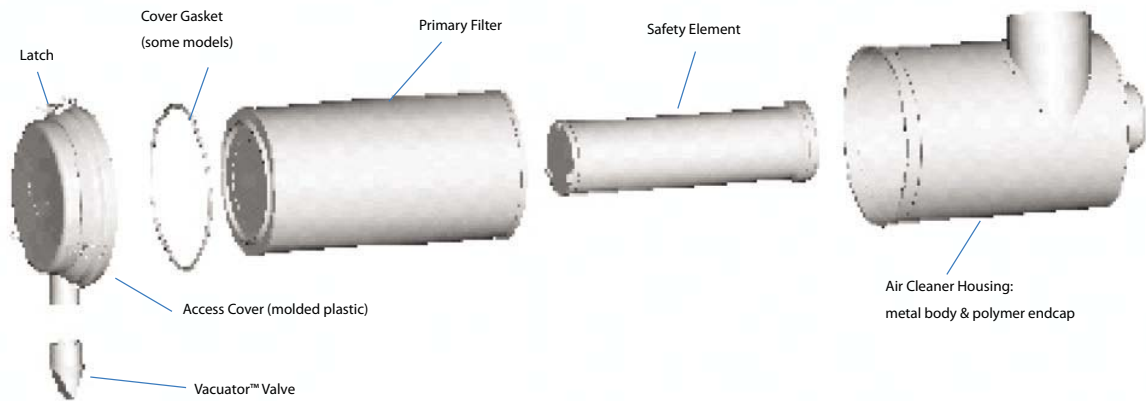
For Medium Dust Conditions



ServiceParts:Style A



ServiceParts:Style B



FRG Service Parts

Air Cleaner Models	Style	filter primary (1)	filter safety (2)	Vacuator Valve	dustcup/cover	baffle	clamp	latch	o-ring	mounting band (3)
G100395	A	P601790	P777639 std	P103198	P103827	P602211	P106071		P101401	P004076
G100398	A	P601790	P777639 optional	P103198	P103827	P602211	P106071		P101401	P004076
G120415	A	P601767	P601774 std	P103198	P109296	P106329	P121067		P017804	H000349
G120417	A	P601767	P601774 optional	P103198	P109296	P106329	P121067		P017804	H000349
G140523	A	P532503	P532504 std	P103198	P109297	P106771	P100866		P017335	H000350
G140526	A	P532503	P532504 optional	P103198	P109297	P106771	P100866		P017335	H000350
G160679	A	P549523	P549530 std	P103198	P106952	P106637	P100789		P017336	H000351
G150092	B	P777868	P777869 std	P776008	P777920			P776033		P016845
G180031	B	P781098	P781102 std	P105220	P781084					H770037

Numbers in parenthesis indicate Application Notes. These numbers are not part of the product/part number or ID.

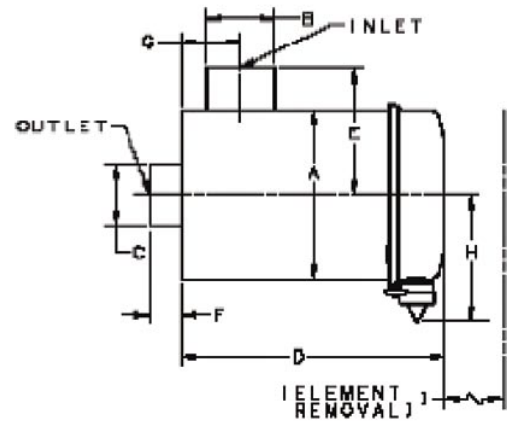
1) Standard Primary Filter is shipped with air cleaner when initially purchased.

2) Where 'std' is indicated, a Safety Filter is shipped with the air cleaner when purchased as standard. Where 'optional' is indicated, a Safety Filter is available if required to fit this air cleaner but it is not shipped with the housing. N.B. adding a safety filter to this assembly will decrease the maximum air flow throughput.

3) Two Mounting Bands are required for proper installation.

**FWG AXIAL SEAL STYLE AIR CLEANERS ARE STILL AVAILABLE.
FOR BETTER VALUE & PERFORMANCE, DONALDSON RECOMMENDS
CONSIDERING UPGRADING TO THE LATEST STYLE
OF FPG/FRG RADIALSEAL AIR CLEANERS.**

**CONTACT DONALDSON CUSTOMER SERVICE
OR CONSULT YOUR DONALDSON REPRESENTATIVE
FOR A SUITABLE REPLACEMENT**

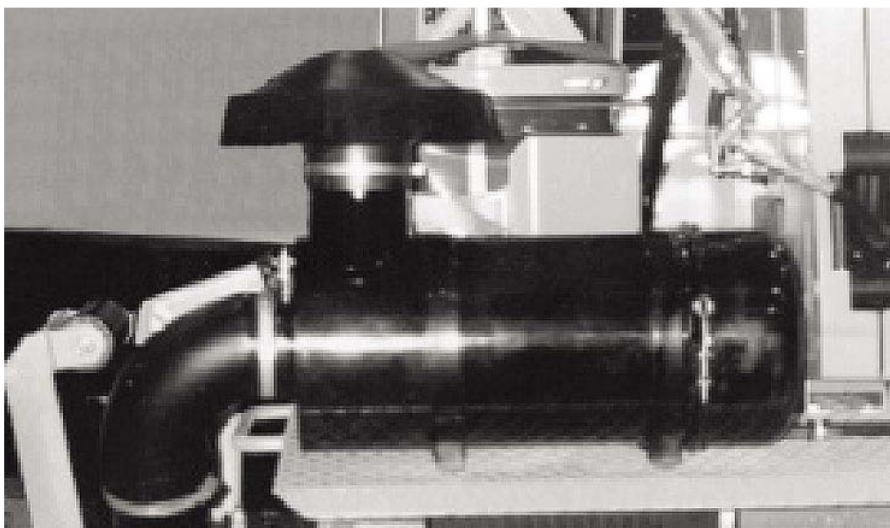
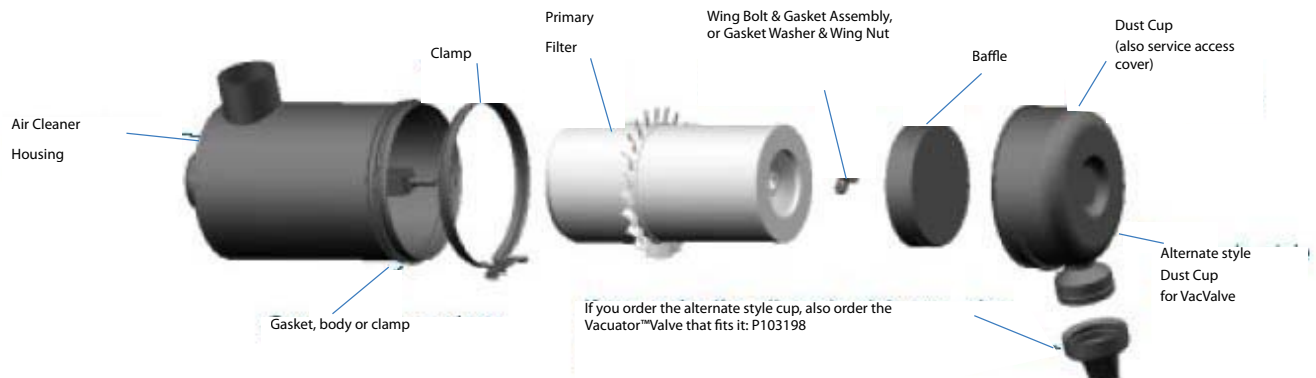


FWG Specifications

Air Cleaner Models	Vacuator Fitted?	Initial Restriction Airflow CFM @		Body Dia. (A)	Housing Length (B)	Inlet Height (C)	Inlet Dia. (D)	Outlet Diameter (E)	(F)	(G)	(H)	Service Clear.		Weight
		6"H2O	8"H2O									(I)	(J)	
G042526	no	58	67	4.38" 111mm	9.7" 246mm	1.75" 44mm	1.75" 44mm	1.75" 44mm	3.5" 90mm	1.5" 38mm	3.00" 76mm	5.00" 127mm	5.25" 133mm	3.75lb 1.7kg
G052528	no	77	90	5.25" 133mm	12.3" 312mm	2.3" 58mm	2.00" 50mm	2.00" 50mm	4.00" 101mm	1.5" 38mm	3.2" 81mm	8.53" 217mm	6.12" 15mm	4.75lb 2.15kg
G052527	yes	77	90	5.25" 133mm	12.3" 312mm	2.3" 58mm	2.00" 50mm	2.00" 50mm	4.00" 101mm	1.5" 38mm	3.2" 81mm	8.53" 217mm	6.12" 15mm	4.75lb 2.15kg
G065180	no	112	130	6.5" 165mm	13.7" 348mm	2.5" 63mm	2.5" 63mm	2.25" 57mm	4.75" 121mm	2.00" 50mm	3.2" 81mm	8.94" 227mm	7.38" 187mm	6.5lb 2.9kg
G068023	yes	112	130	6.5" 165mm	13.7" 348mm	2.5" 63mm	2.5" 63mm	2.25" 57mm	4.75" 121mm	2.00" 50mm	3.2" 81mm	8.94" 227mm	7.38" 187mm	6.5lb 2.9kg
G080061	no	205	238	8.00" 203mm	14.9" 378mm	2.10" 53mm	3.00" 76mm	3.00" 76mm	7.00" 178mm	2.6" 66mm	3.2" 81mm	9.25" 210mm	8.88" 226mm	9.5lb 4.3kg
G080074	yes	205	238	8.00" 203mm	14.9" 378mm	2.10" 53mm	3.00" 76mm	3.00" 76mm	7.00" 178mm	2.6" 66mm	3.2" 81mm	9.25" 210mm	8.88" 226mm	9.5lb 4.3kg
G108027	no	296	343	10.19" 259mm	16.2" 411mm	2.56" 65mm	4.00" 101mm	4.00" 101mm	7.5" 190mm	2.69" 68mm	4.00" 101mm	7.31" 186mm	11.06" 281mm	17lb 7.71kg
G108037	yes	296	343	10.19" 259mm	16.2" 411mm	2.56" 65mm	4.00" 101mm	4.00" 101mm	7.5" 190mm	2.69" 68mm	4.00" 101mm	7.31" 186mm	11.06" 281mm	17lb 7.7kg
G120059	no	369	433	11.81" 300mm	16.9" 429mm	2.19" 56mm	4.5" 114mm	4.00" 101mm	7.88" 200mm	3.25" 83mm	4.00" 101mm	7.09" 180mm	13.62" 346mm	23lb 10.4kg
G120063	yes	369	433	11.81" 300mm	16.9" 429mm	2.19" 56mm	4.5" 114mm	4.00" 101mm	7.88" 200mm	3.25" 83mm	4.00" 101mm	7.09" 180mm	13.62" 346mm	23lb 10.4kg
G140077	no	541	635	14.00" 356mm	19.2" 488mm	2.19" 56mm	5.00" 127mm	5.5" 140mm	9.00" 228mm	3.5" 89mm	4.00" 101mm	9.09" 231mm	15.81" 402mm	32lb 14.5kg
G140083	yes	541	635	14.00" 356mm	19.2" 488mm	2.19" 56mm	5.00" 127mm	5.5" 140mm	9.00" 228mm	3.5" 89mm	4.00" 101mm	9.09" 231mm	15.81" 402mm	32lb 14.5kg
G160104	no	768	886	16.00" 406mm	21.7" 551mm	2.53" 64mm	6.00" 152mm	6.00" 152mm	12.00" 305mm	4.00" 101mm	4.00" 101mm	11.09" 282mm	17.81" 452mm	45lb 20.4kg
G160107	yes	768	886	16.00" 406mm	21.7" 551mm	2.53" 64mm	6.00" 152mm	6.00" 152mm	12.00" 305mm	4.00" 101mm	4.00" 101mm	11.09" 282mm	17.81" 452mm	45lb 20.4kg

FWG Cyclopac®

For Medium Dust Conditions



This FWG Air Cleaner, with an inlet hood for rain protection, protects a stationary engine.

**THIS PRODUCT CAN
BE FITTED WITH
Donaldson®
ENDURANCE™
HIGH PERFORMANCE
ELEMENTS**
Call the Donaldson Customer Service Team
for further information!
Phone: +61 (0) 2 4350 2000

FWG Service Parts

Air Cleaner Models	Element Assy	Gasket Washer	Wing Nut/bolt	Clamp Assy.	Baffle Assy.	Standard cup Assy.	Cup gasket	Vertical Vacuator Cup Assy.	Vacuator Valve
G04	P121240	P805477	P017858	P002846	P102754	P102755	None	None	
G05	P182050	P101872	P102144	P002904	P102523	P103007	None	P103838	P103198
G06	P182052	P101872	P102144	P002940	P102510	P102805	None	P103836	P103198
G08	P182054	P101872	P102144	P003951	P102980	P103113	None	P103827	P103198
G10	P182045	P018462	P016984	P106071	P103135	P103519	P101401	P103827	P103198
G12	P182035	P018462	P016984	P100808	P106329	P106589	P017804	P109296	P103198
G14	P182000	P018462	P016984	P100866	P106771	P106773	P017335	P109297	P103198
G16	P182001	P018462	P016984	P100789	P106637	P106639	P017336	P106952	P103198