

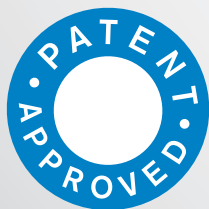


LOAD & LUBE
SAFETY GREASE COUPLER

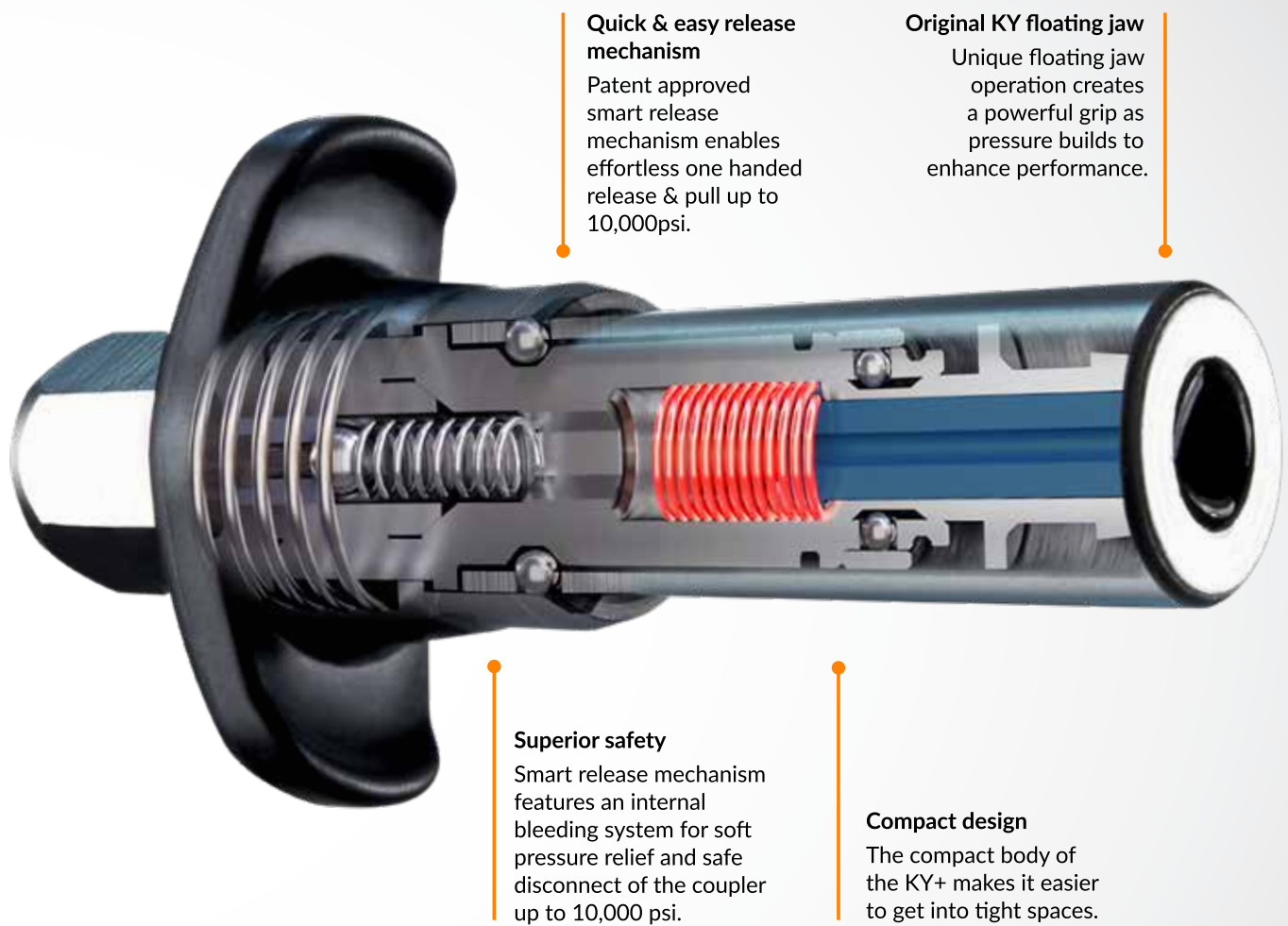


QUICKER
EASIER
SAFER

KY+ SAFETY GREASE COUPLER



**THE IMPROVEMENTS ARE
PATENTLY OBVIOUS**



Quick & easy release mechanism

Patent approved smart release mechanism enables effortless one handed release & pull up to 10,000psi.

Original KY floating jaw

Unique floating jaw operation creates a powerful grip as pressure builds to enhance performance.

Superior safety

Smart release mechanism features an internal bleeding system for soft pressure relief and safe disconnect of the coupler up to 10,000 psi.

Compact design

The compact body of the KY+ makes it easier to get into tight spaces.

The innovative new KY+ grease coupler is a game changer in equipment maintenance. In fact, for any high grease application, KY+ delivers improved access, productivity and safety through a new patented design. The “superior interior” is the KY+ difference. KY+ is more versatile, reliable, leak free and easy to use. Macnaught has again lifted the standard for grease couplers. To see real innovation in action, just visit KYplus.com.au

KY+ COMMUNICATION SUPPORT

Double Page Magazine Ads

macnaught

QUICKER EASIER SAFER

THE IMPROVEMENTS ARE PATENTLY OBVIOUS

ORIGINAL KY+ FLOATING LAW
Unique floating jaw operation creates a powerful grip as pressure builds to enhance performance.

QUICK & EASY RELEASE MECHANISM
Patented smart release mechanism enables effortless one-handed twist and pull release up to 50,000psi.

COMPACT DESIGN
The compact body of the KY+ makes it easier to get into tight spaces.

SUPERIOR SAFETY
Smart release mechanism features an internal bleeding system for safe pressure relief and safe disconnection of the coupler up to 50,000psi.

THE "SUPERIOR INTERIOR" IS THE KY+ DIFFERENCE.
The innovative new KY+ grease coupler is a game changer in transport, manufacturing, mining, agriculture and earthmoving. In fact for any high grease application, the new KY+ delivers improved access, productivity and safety through a patented design.

KY+ is more versatile, reliable, and easy to use. And due to our unique locking and pressure release mechanism, the KY+ coupler creates a more powerful, secure and safer grip. Macnaught has again lifted the standard for grease couplers. To see real innovation in action, just visit KYplus.com.au

KY+ LOAD & LUBE SAFETY GREASE COUPLER

Macnaught Pty Ltd, 41-49 Innovation St, Tarvela NSW 2205, Australia
Ph: +61 2 9567 7045 Fax: +61 2 9567 7770 Email: info@macnaught.com Website: macnaught.com

Single Page Magazine Ads

macnaught

QUICKER EASIER SAFER

THE IMPROVEMENTS ARE PATENTLY OBVIOUS

ORIGINAL KY+ FLOATING LAW
Unique floating jaw operation creates a powerful grip as pressure builds to enhance performance.

QUICK & EASY RELEASE MECHANISM
Patented smart release mechanism enables effortless one-handed twist and pull release up to 50,000psi.

COMPACT DESIGN
The compact body of the KY+ makes it easier to get into tight spaces.

SUPERIOR SAFETY
Smart release mechanism features an internal bleeding system for safe pressure relief and safe disconnection of the coupler up to 50,000psi.

THE "SUPERIOR INTERIOR" IS THE KY+ DIFFERENCE.
The innovative new KY+ grease coupler is a game changer in transport, manufacturing, mining, agriculture and earthmoving. In fact for any high grease application, the new KY+ delivers improved access, productivity and safety through a patented design. KY+ is more versatile, reliable, and easy to use. And due to our unique locking and pressure release mechanism, the KY+ coupler creates a more powerful, secure and safer grip. Macnaught has again lifted the standard for grease couplers. To see real innovation in action, just visit KYplus.com.au

KY+ LOAD & LUBE SAFETY GREASE COUPLER

Macnaught Pty Ltd, 41-49 Innovation St, Tarvela NSW 2205, Australia
Ph: +61 2 9567 7045 Fax: +61 2 9567 7770 Email: info@macnaught.com Website: macnaught.com

In-Store POS and Signage

KY+ LOAD & LUBE SAFETY GREASE COUPLER

QUICKER EASIER SAFER

THE IMPROVEMENTS ARE PATENTLY OBVIOUS

AUSTRALIAN PATENT APPROVED

macnaught

Product Sheets

KY+ LOAD & LUBE SAFETY GREASE COUPLER

Macnaught's patent approved release mechanism delivers enhanced safety and is both water and faster to use. The KY+ retains the benefit of the original floating jaw design, providing a strong, leak free connection while improving safety and usability through:

- Patented pressure relief that reduces the risk of high pressure grease release.
- Step-to-step of connector releasing (twist, hold and high grip) - **LOAD & LUBE!**

FEATURES & BENEFITS

- Patented safety from internal pressure relief
- Compact design for greater accessibility
- Patent approved release mechanism for easy disconnection under pressure (Patent No: 2022245)
- Approved (New Application No: 2022245)
- Original floating jaw design for leak free grip

TECHNICAL SPECIFICATIONS

- Built to withstand pressure relief
- 1.5" (37.5mm) (3000 PSI) (207 MPa) (29000 PSI) (2000 bar) (200 MPa)
- Maximum working pressure: 50,000psi (3450 bar)

macnaught.com Innovation. The only way to stay ahead.

Webpage

macnaught

PRODUCTS RESOURCES OUR BRANDS ABOUT US

Introducing KY+ LOAD & LUBE SAFETY GREASE COUPLER

Built to last since 1948

QUICKER EASIER SAFER

70 YEARS OF INNOVATION

Latest News & Articles

Latest Video

macnaught Innovation. The only way to stay ahead.

Video Library

GREASE RELEASED AT HIGH PRESSURE CAN BE DANGEROUS

QUICK & EASY RELEASE MECHANISM

SUPERIOR SAFETY

ORIGINAL KY+ FLOATING LAW

COMPACT DESIGN

KY+ LOAD & LUBE SAFETY GREASE COUPLER

Counter Display

KY+ LOAD & LUBE SAFETY GREASE COUPLER

Digital

Introducing KY+ LOAD & LUBE SAFETY GREASE COUPLER

QUICKER EASIER SAFER

THE IMPROVEMENTS ARE PATENTLY OBVIOUS

KY+ LOAD & LUBE SAFETY GREASE COUPLER

KY+ LOAD & LUBE SAFETY GREASE COUPLER

Macnaught's patented release mechanism delivers enhanced safety and is both easier and faster to use. The KY+ retains the benefit of the original floating jaw design, providing a strong, leak-free connection while improving safety & usability through:

- Internal pressure relief that reduces the risk of high pressure grease release
- Quick & easy release mechanism enabling one handed operation - Load & Lube!



KYPLUS-01 (BSP)



KYPLUS-02 (NPT)



SUPERIOR SAFETY



ORIGINAL KY FLOATING JAW



COMPACT DESIGN



PATENTED RELEASE MECHANISM

FEATURES & BENEFITS

- Patent Approved internal pressure relief mechanism for easy disconnect under pressure and superior safety
- Compact design for greater accessibility
- Original Floating jaw design for leak free grip
- Quick & easy release mechanism enabling one handed operation - Load & Lube

TECHNICAL SPECIFICATIONS

- Built-in hydraulic pressure relief
- 1/8" (F) inlet (BSP/NPT) & M10X1 (F) inlet threads available
- Maximum working pressure: 10,000psi (68,900kPa)

LOAD & LUBE



DISENGAGED

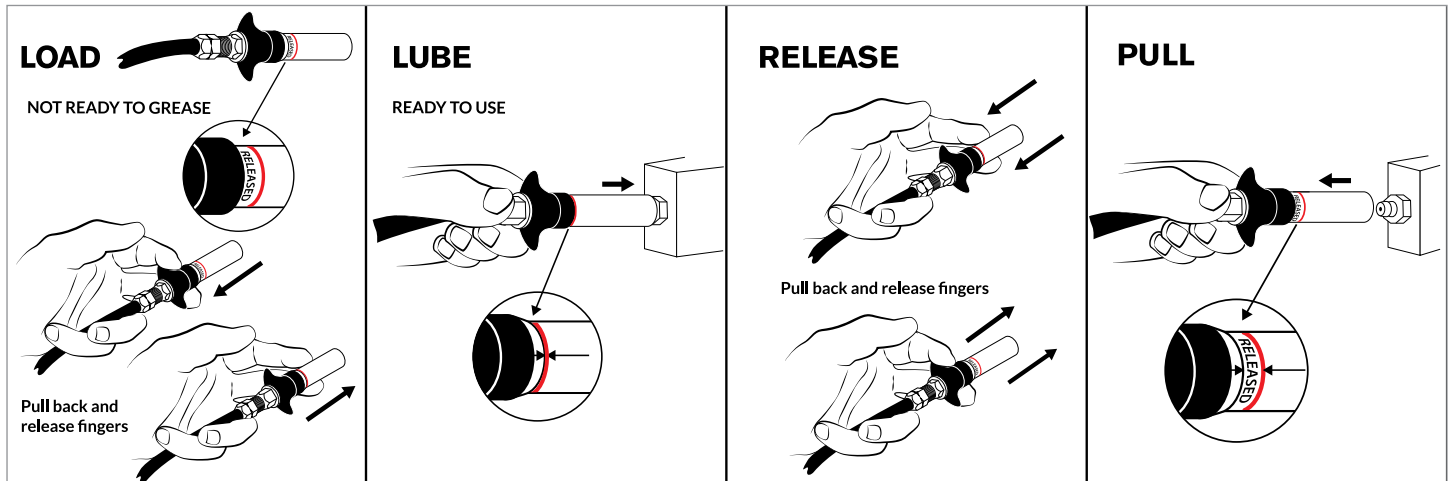
Internal pressure released.
Jaws released. Not ready to grease.



ENGAGED

Detent balls holding mechanism forward.
Jaws engaged. Ready to grease.

KY+ Instructions for use



For all your typical greasing applications



Used with the K29-01 FLEXIGUN® 450g Grease Gun



Used with the PG450 18v Li-Ion Battery POWERGUN®



Used with the K45-01 LEVERGUN® 450g Grease Gun



Used with the K7-01 MINILUBE® 20kg Greasing System

Blister Packaging



KYPLUS-01 (1/8" BSP)



KYPLUS-02 (1/8" NPT)



KYPLUS-03 (M10X1 Metric)

Counter Display

- KYPLUS-01-10 (BSP)
- KYPLUS-02-10 (NPT)
- KYPLUS-03-10 (M10X1)



KY+ 10 Trade Pack

- KYPLUS-01TP (BSP)
- KYPLUS-02TP (NPT)



KY+ 100 Trade Pack

- KYPLUS-01TP-100 (BSP)
- KYPLUS-02TP-100 (NPT)

Packaging Options

PRODUCT CODES:	Description	Weight	Width	Length	Height	Coupler Quantities
KYPLUS-01	KYPLUS Grease Coupler - BSP	85g	110mm	30mm	165mm	1
KYPLUS-02	KYPLUS Grease Coupler - NPT					
KYPLUS-03	KYPLUS Grease Coupler - M10X1					
KYPLUS-01-10	KYPLUS Grease Coupler - BSP (Counter Display - 10's pack)	950g	139mm	358mm	170mm	10 (in blister packs)
KYPLUS-02-10	KYPLUS Grease Coupler - NPT (Counter Display - 10's pack)					
KYPLUS-03-10	KYPLUS Grease Coupler - M10X1 (Counter Display - 10's pack)					
KYPLUS-01TP	KYPLUS Grease Coupler - BSP (Trade Pack - 10 Units)	900g	150mm	92mm	75mm	10
KYPLUS-02TP	KYPLUS Grease Coupler - NPT (Trade Pack - 10 Units)					
KYPLUS-01TP-100	KYPLUS Grease Coupler - BSP (Trade Pack - 100 Units)	9kg	160mm	485mm	165mm	100
KYPLUS-02TP-100	KYPLUS Grease Coupler - NPT (Trade Pack - 100 Units)					

MACNAUGHT Pty Ltd
41-49 Henderson Street
Turrella, New South Wales
Australia 2205

T 1800 185 102
F +61 2 9597 7773
E info@macnaught.com
W www.macnaught.com

For Macnaught warranty,
terms and conditions see
macnaught.com/warranty

To subscribe to our mailing list go to
macnaught.com/subscribe

©Macnaught Pty Ltd, 2019.

MP263